

# TSM

## TSM11 Quick Setup Guide



### Requirements

You will need these items to set-up the TSM11:

- A 15 - 30 volt DC (24VDC nominal) power supply
- A PC running Windows XP, Vista, Windows 7 or Windows 8 (32-bit or 64-bit)
- A mating cable(for power, I/O and communication connection, included in package)
- A RS-485 converter
- Download *Step-Servo Quick Tuner* software from Applied Motion Products' website

### Step1

- Visit [www.applied-motion.com/products/software](http://www.applied-motion.com/products/software) to download the Step-Servo Quick Tuner software
- Install the *Step-Servo Quick Tuner*
- Connect the drive to the PC using RS-422/485, it is recommended to set up in a 4-Wire configuration (Please Refer to “Communication Wiring” on the back page)

### Step2

#### Connect the Power Supply

- Connect the power supply “+” terminal to the drive “+” terminal & the power supply “-” terminal to the drive “-” terminal using AWG26 wire.

**Be careful not to reverse the wires. Reversing the connection may open the internal fuse and void the warranty.**

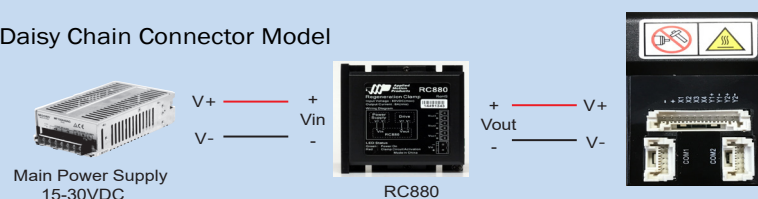
- If a regulated power supply is being used, there may be a problem with regeneration that can be solved with the use of a Applied Motion Products RC880 Regeneration Clamp. Please see the Applied Motion Products website or the TSM11 User Manual for more information.

**Note: As with any integrated motor, the TSM11 must be mounted so as to provide maximum heat sinking and airflow. Keep enough space around the Integrated Motor to allow for airflow.**

#### Standard Model

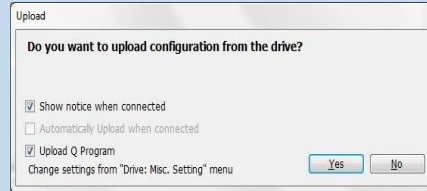
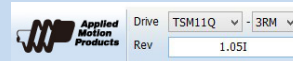


#### Daisy Chain Connector Model



## Step3

- Open the Step-Servo Quick Tuner software on your PC.
- Select communication port for the Motor.
- Apply power to the TSM11.
- The software should automatically identify the motor model number upon power up and display the 'Upload' panel
- Click "yes" to upload the drive configuration



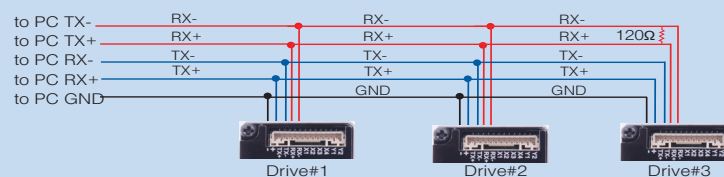
- Begin configuring the motor according to your application requirements, See the software help file for details.
- When ready to test your configuration, click Download All to Drive.

## Communications Wiring

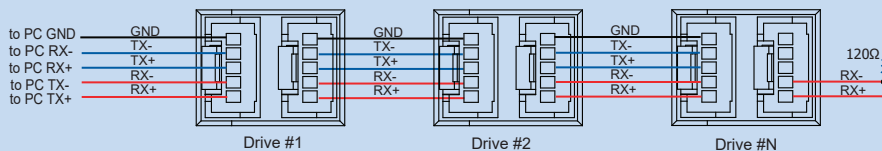
If the PC does not have an RS-422/485 serial port, a converter is required. Applied Motion Products part number 8500-003 is an excellent choice for USB to serial conversion.

**Four-wire System** communication wiring is highly recommended for TSM11.

### Standard Model

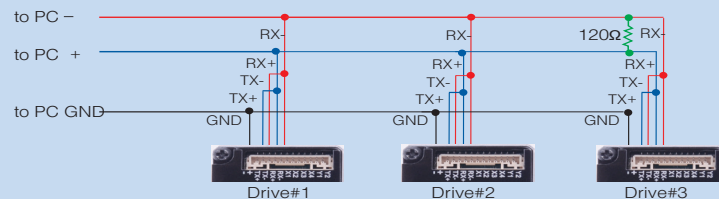


### Daisy Chain Connector Model



**Two-wire System** communication, please allow minimum 10ms transmit delay, This can be made over the network using the TD command, or it can be set using the Step-Servo Quick Tuner software.

### Standard Model



### Daisy Chain Connector Model

