

# STM

## STM23XIP Quick Setup Guide



### Requirements

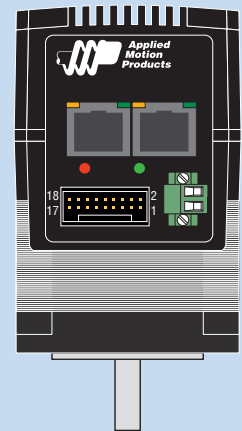
- A 24-70VDC power supply.
- A small flat blade screwdriver for tightening the connectors (included).
- A PC running Microsoft Windows XP, or Windows7/8/10.
- Software: *ST Configurator*
- For Ethernet models, you'll need an Ethernet cable (CAT5e or CAT6).



### Step 1



- Visit [www.applied-motion.com/products/software](http://www.applied-motion.com/products/software) to download the *ST Configurator* software.
- Install the *ST Configurator* software on your PC.
- Connect the drive to the PC using the appropriate programming cable.
- For Ethernet models a user-supplied standard (RJ45) Ethernet cable is required, Cat 5e or 6 recommended. Please plug the cable into the COM1 connector on the motor for configuration. The COM2 connector on the motor can be used to "daisy chain" this motor to another motor's COM1 port.
- For a direct connection between the PC and STM23, set the static IP address of the PC to 10.10.10.11. For more details on Ethernet connections see the STM23 hardware manual.



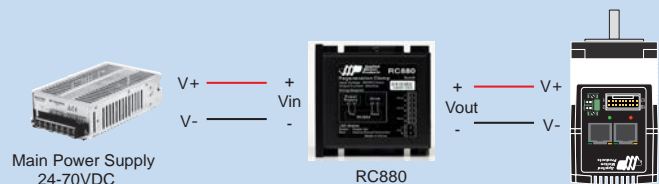
### Step 2

#### Connect the Power Supply

- Connect the main power supply "+" terminal to the motor's "+" terminal and the power supply "-" terminal to the motor's "-" terminal using 16 to 20-gauge wire.

**Be careful not to reverse the "+" and "-" wires. Reversing the connection may blow the internal fuse and void the warranty.**

- If a regulated power supply is being used, there may be a problem with regeneration that can be solved with the use of an Applied Motion RC880 Regeneration Clamp. See Applied Motion website or the Hardware Manual for more information.



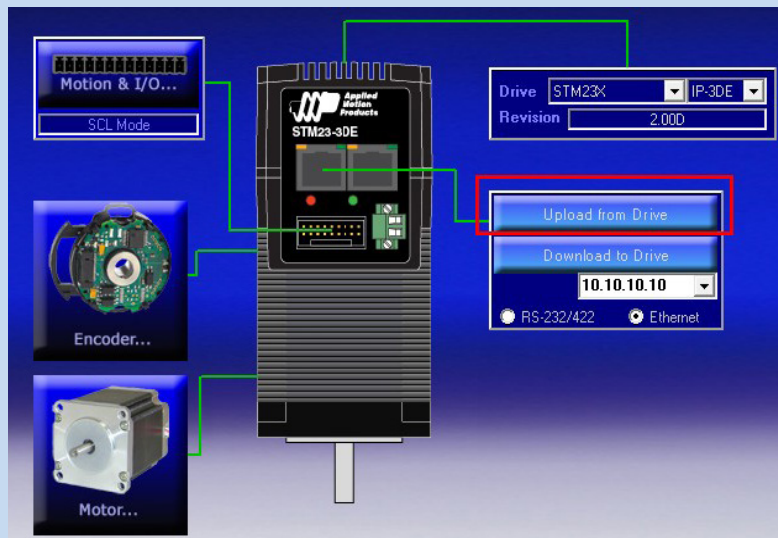
## Step3

### Configure STM23 with ST Configurator software.

For ethernet communication, standard RJ45 port is used, Shielded twisted pair cable (CAT5e or CAT6) is recommended.

- Open the *ST Configurator* software on your PC.
- Select Ethernet port for the motor and entering IP address
- Apply power to the STM23.
- Click upload from drive.

NOTE: If your Ethernet motor does not communicate, you might need to reset the IP address to the default of 10.10.10.10. You can do this by powering down the motor, then powering it up with the Ethernet cable UNPLUGGED. Plug in the cable 5 seconds after power up and click Connect.



- Begin configuring the motor according to your application requirements, See the software help file for details.
- When ready to test your configuration, click Download to Drive.

If you have any questions or comments, please call Applied Motion Products Customer Support: (800) 525-1609, or visit us online at [www.applied-motion.com](http://www.applied-motion.com).



404 Westridge Dr.  
Watsonville, CA 95076, USA

1-800-525-1609  
[www.applied-motion.com](http://www.applied-motion.com)

**STM23XIP Quick Setup Guide**

920-0144A  
5/22/2019