

ST5/10-Plus Quick Setup Guide



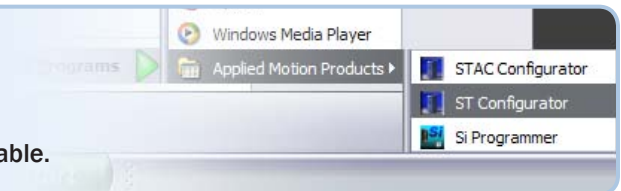
Requirements

To begin, make sure you have the following equipment:

- A compatible stepper motor.
- A small flat blade screwdriver for tightening the connectors (included).
- A personal computer running Microsoft Windows 95, 98, NT, Me, 2000 or XP, Vista, 7, 8 or 10.
- *ST Configurator™* software (available at www.applied-motion.com).
- An Applied Motion programming cable (included).
- For more detailed information, please download and read the *ST5/10-S Hardware Manual*, available at www.applied-motion.com/support/manuals.

Step 1

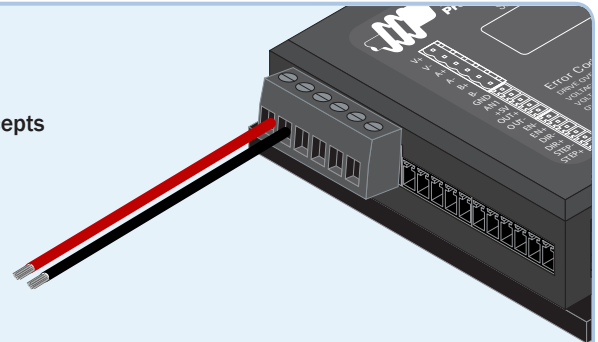
- Download and install the *ST Configurator™* software.
- Launch the software by clicking:
Start / Programs / Applied Motion Products / ST Configurator
- Connect the drive to your PC using the appropriate programming cable.



Step 2

- Wire the drive to the DC power source.
(do not apply power until all connections to the drive have been made)

Note, the ST5-Plus accepts DC voltages from 24-48V, while the ST10-Plus accepts DC voltages from 24-80V.



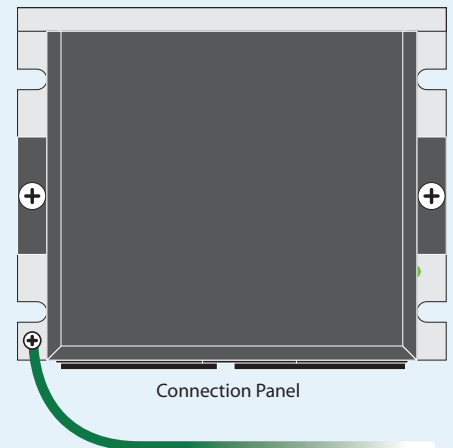
Ensure a proper earth ground connection by using the screw on the left side of the chassis.

If using an external fuse, we recommend the following:

ST5: 7 amp fast acting fuse

ST10: 7 amp fast acting fuse

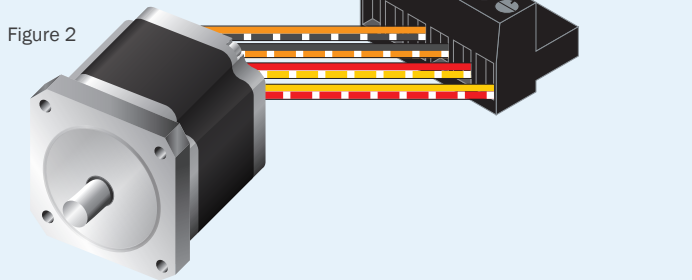
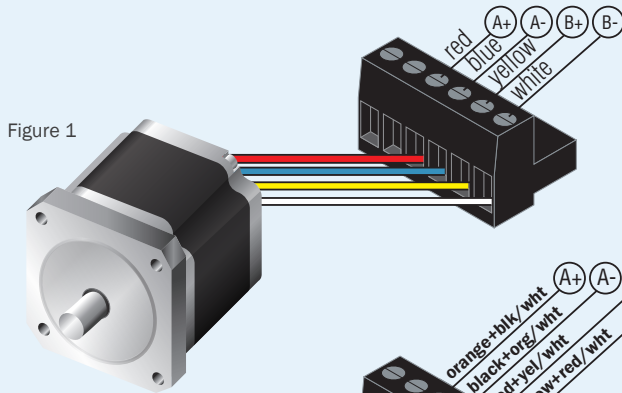
See the *ST5/10-S Hardware Manual* for more information about power supply and fuse selection.



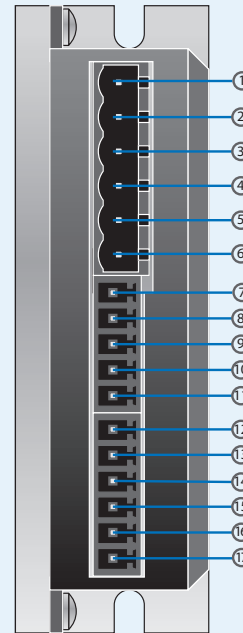
Step 3

Warning - If you are using a non-Applied Motion motor, do not connect the motor until you have configured the drive for your motor. Refer to Step 4.

Connect the drive to the motor. Four lead motors can be connected in only one way, as shown in Figure 1. We recommend that eight lead motors be connected in parallel, as shown in Figure 2. If using a non-Applied Motion Products motor, please refer to your motor specs for wiring information.



I/O Pinout - ST5/10-S/Plus

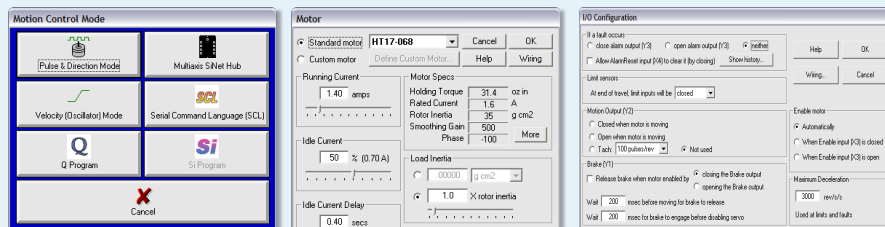


- Power ①
- GND ②
- Motor A+ ③
- Motor A- ④
- Motor B+ ⑤
- Motor B- ⑥
- GND ⑦
- AIN ⑧
- +5V ⑨
- OUT- ⑩
- OUT+ ⑪
- EN- ⑫
- EN+ ⑬
- DIR- ⑭
- DIR+ ⑮
- STEP- ⑯
- STEP+ ⑰

Step 4

a) Apply power to the drive.

b) Follow the configuration instructions in the ST Configurator™ help screens. The ST Configurator™ software can be used to set up your drive to operate in several different modes including: Pulse & Direction, Analog Velocity, and SCL.



If you have any questions or comments, please call Applied Motion Products Customer Support: (800) 525-1609, or visit us online at www.applied-motion.com.



404 Westridge Dr.
Watsonville, CA 95076
Tel: 800-525-1609
www.applied-motion.com

ST5/10-Plus Quick Setup Guide

920-0005 D