



SSM23 Q/IP Ethernet Quick Setup Guide



Requirements

To begin, make sure you have the following equipment:

- A small flat blade screwdriver for tightening the connectors (included).
- A 12-70V DC power supply.
- A personal computer running Microsoft Windows XP, Vista, 7, 8 or 10 (32 or 64 bit).
- Step-Servo Quick Tuner software (available at www.applied-motion.com/products/software).
- A CAT5 network cable (not included).
- For more detailed information, please download and read the appropriate hardware manual, available at www.appliedmotion.com/support/manuals.

Step 1

- Download and install the Step-Servo Quick Tuner software.
- If you intend to connect the drive directly to your PC, configure your computer to use IP address 10.10.10.11. (For instructions on connecting your SSM drive to a local area network (LAN), please consult the appropriate hardware manual)
- On the SSM drive, select switch position 0, which will assign IP address 10.10.10.10. (See the hardware manual for further details on selecting IP addresses for the drive and PC)
- Launch the software by clicking: Start / All Programs / Applied Motion Products / Step-Servo Quick Tuner

Step 2

Wire the drive to the DC power source.

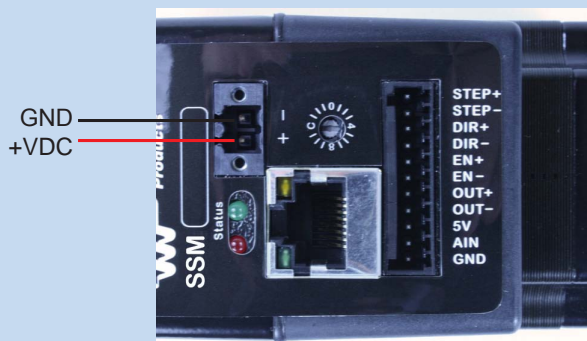
(Do not apply power until Step 3)

Note - the SSM drive accepts DC voltages from 12-70V. If using an external fuse, we recommend a 4 amp fast acting fuse .

(See the appropriate hardware manual for more information about power supply and fuse selection.)

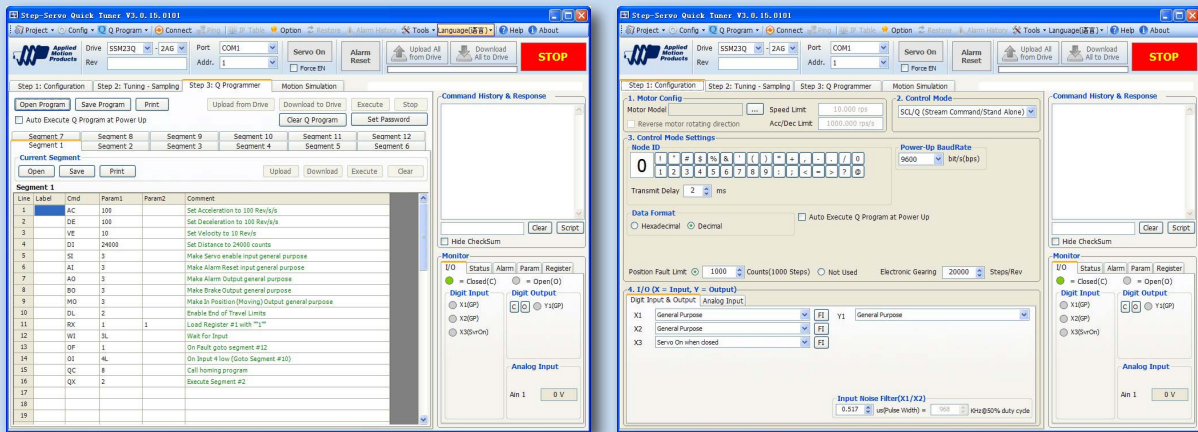
Connect I/O, if required by your application.

(See the appropriate hardware manual for more information about wiring I/O to the SSM drive.)



Step3

- Apply power to the drive. The drive model and firmware revision should be automatically displayed in the Step-Servo Quick Tuner software.
- Follow the configuration instructions in the Step-Servo Quick Tuner help screens. The Step-Servo Quick Tuner software can be used to set up your drive to operate in several different modes including: pulse & direction, velocity (oscillator), streaming commands (SCL), and Q programming mode.
- To test motion, use Jog buttons on Motion Simulation tab in Step-Servo Quick Tuner.



If you have any questions or comments, please call Applied Motion Products Customer Support: (800) 525-1609, or visit us online at www.applied-motion.com.



404 Westridge Dr.
Watsonville, CA 95076, USA
1-800-525-1609
Tel (831) 761-6555
www.applied-motion.com

**SSM23 Q/IP Ethernet
Quick Setup Guide**

920-0091B