

SSDC EC

SSDC EtherCAT Quick Setup Guide

Requirements



- A 24-70 VDC power supply
- A compatible StepSERVO motor
- A small flat blade screwdriver for tightening the connectors (included)
- A PC running Windows XP/ Vista / Windows 7 / Windows 8 / Windows 10 (32-bit or 64-bit) system
- RS232 cable is required for configuration (included)
- **Software: Step-Servo Quick Tuner, version 3.0.16.0725 or later**
- A CAT5 cable for EtherCAT master or daisy chain connection (included)
- Motor extension cable p/n 3004-408 for NEMA11 size motor or p/n 3004-403 for NEMA17/23/24/34 motor (recommended)
- Encoder extension cable p/n 3004-336 for NEMA11 size motor or p/n 3004-338 for NEMA17/23/24/34 size motor (recommended)
- I/O cable, p/n 3004-340 (optional)

Step 1

Installing the Software

- a) Visit www.applied-motion.com/products/software to download the Step-Servo Quick Tuner software.
- b) Install the Step-Servo Quick Tuner software on your PC.
- c) Connect the drive to the PC with RS232 configuration cable

Step 2

Connecting the Power Supply

- a) Connect the Main Power Supply.

Connect the power supply's "+" terminal to the drive's "V+" terminal.
Connect the power supply's "-" terminal to the drive's "V-" terminal.
SSDC-EC power input voltage range is 24-70 VDC.

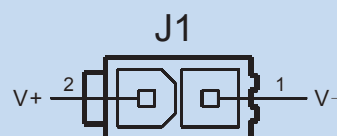
Note: Be careful not to reverse the "+" and "-" wires.

Reversing the connection may blow the internal fuse and void the warranty.

SSDC03: 12 – 48VDC

SSDC06: 24 – 70VDC

SSDC10: 24 – 70VDC

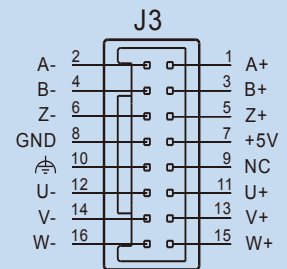
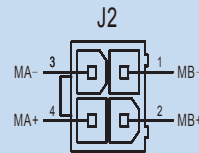


- b) Ensure a proper earth ground connection to the drive's chassis.

Step 3

Connecting the Motor

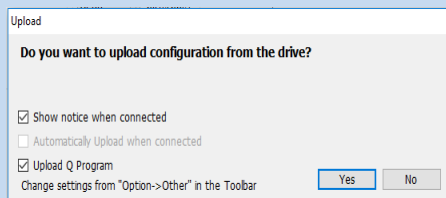
Use the optional motor extension cable and encoder extension cable or make the extension cables using connector housings and crimps included in package. Connect the motor power wires: black, green, red and blue wires to drive's A+, A-, B+ and B- respectively. Plug the encoder feedback cable into the encoder feedback connector on the drive.



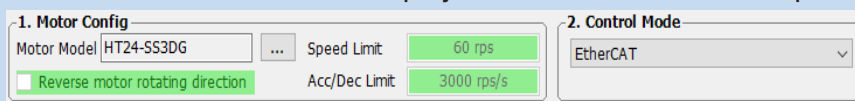
Step 4

Configuring the Drive

- Run the Step-Servo Quick Tuner software and select the right COM port in the software.
- Apply power to the drive.
- The software will recognize the drive & display the model & firmware version.
- Click "Yes" to upload the drive configuration.



- Ensure the model number displayed matches the actual StepSERVO motor connected to the drive.



- Configure the control mode setting, I/O function and tuning parameters, etc.
- When ready to test your configuration, click "Download All to Drive".

Step 5

Connecting the EtherCAT

Dual RJ-45 connectors (connection CN3) accept standard Ethernet cables and are categorized as 100BASE-TX (100 Mb/sec) ports. CAT5 or CAT5e (or higher) cables should be used.

The IN port connects to a master, or to the OUT port of an upstream node.

The OUT port connects to a downstream node. If the drive is the last node on a network, only the IN port is used. No terminator is required on the OUT port.

For connection with a master controller, please refer to connection guide on the Applied Motion Products website.



If you have any questions or comments, please call Applied Motion Products Customer Support: (800) 525-1609, or visit us online at www.applied-motion.com.

404 Westridge Dr.
Watsonville, CA 95076
Tel: 800-525-1609
www.applied-motion.com

**SSDC EtherCAT
Quick Setup Guide**
920-0150A