

SPECIFICATIONS:

STEPS PER REVOLUTION: 200	ROTOR INERTIA: 900 G-CM ² (4.91 OZ-IN ²) REF
STEP ANGLE: 1.8°	HOLDING TORQUE: 2.5 N-m (354 OZ-IN) MIN ¹
STEP TO STEP ACCURACY: ±5 % ¹ , ²	DETENT TORQUE: 100 mN-m (14.1 OZ-IN) MIN
POSITIONAL ACCURACY: ±5 % ¹ , ³	
HYSTERESIS: - %	INSULATION CLASS: B
WINDING RESISTANCE: 0.9 OHM ±10% AT 25° ⁷	BEARINGS: ABEC 3, DOUBLE SHIELDED
WINDING INDUCTANCE: 2.1 mH ± 20% ⁸	WEIGHT: 1400 G (3 LBS) APPROXIMATE
PHASE VOLTAGE: 3.6 VDC	TEMP. RISE: 80°C MAX. ⁸
PHASE CURRENT: 4.0 AMP (RATED)	OPERATING TEMP. RANGE: -20 TO +50 °C
NUMBER OF PHASES: 2	STORAGE TEMP. RANGE: -30 TO +70 °C
SHAFT RUNOUT: 0.03 T.I.R.	RELATIVE HUMIDITY RANGE: 15 TO 99 %
RADIAL PLAY: 0.02 MAX WITH .5KG RADIAL LOAD.	
END PLAY: 0.08KG MAX WITH .5KG AXIAL LOAD.	

HW24-108

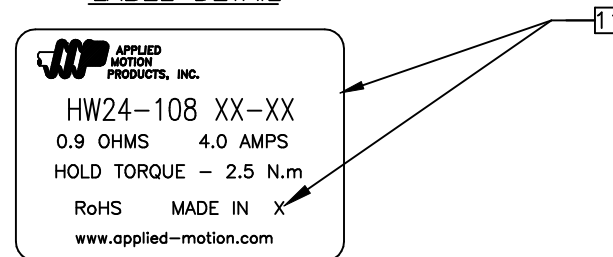
REVISIONS

ECO NO.	REV	DESCRIPTION	DATE	APPROVED
6544	A	INITIAL RELEASE	6/19/12	J Kordik
6565	B	MFGR SPEC CHANGES	7/19/12	
6578	C	SPEC CHANGE	9/19/12	J Kordik
6723	D	ADD NOTE 12	3/22/13	J Kordik
7373	E	END BELL SEALING OPTIONS	2/12/16	J Kordik
7447	F	REVISE NOTE 10	6/7/16	J Kordik

NOTES, UNLESS OTHERWISE SPECIFIED:

- ¹ MEASUREMENTS MADE AT RATED CURRENT IN EACH PHASE.
- ² BETWEEN ANY TWO ADJACENT STEP POSITIONS.
- ³ MAXIMUM ERROR IN 360°.
4. HIPOP 500 VAC, 60 Hz FOR ONE MINUTE.
- ⁵ CABLE, SHIELDED, 3048MM (10FEET MIN), 4 CONDUCTORS AND DRAIN, AWG 22, 7 STRAND MINIMUM, 105°C INSULATION. DRAIN WIRE TO BE CONNECTED TO INSIDE OF REAR ENDBELL.
6. INSULATION RESISTANCE: 100 MEGOHMS MIN AT 500 VDC.
- ⁷ AS MEASURED USING AN A.C. INDUCTANCE BRIDGE, AT 1KHz.
- ⁸ AS MEASURED BY THE CHANGE IN RESISTANCE METHOD, WITH RATED VOLTAGE APPLIED TO 2 PHASES; WITH MOTOR AT REST.
- ⁹ MOTOR TO MEET IP65 STANDARDS. REAR END BELL OPTIONS INCLUDE A SOLID END BELL OR A BRASS PLUG COVERING THE SHAFT BEARING, A 3M LABEL MUST COVER THE BRASS PLUG. CABLE GLAND TO BE NICKEL-PLATED BRASS, ASI P/N 3012215 OR EQUIVALENT.
10. THIS MOTOR IS MANUFACTURED IN COMPLIANCE WITH THE CURRENT EU RoHS DIRECTIVE.
- ¹¹ MOTOR LABEL TO INCLUDE "ROHS" COMPLIANT, 'MADE IN (COUNTRY OF ORIGIN)' AND DATE CODE.
12. END BELLS TO BE PROTECTED WITH BLACK COATING.

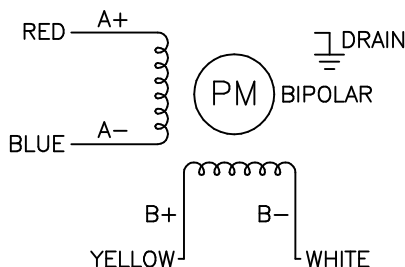
LABEL DETAIL



**SWITCHING SEQUENCE FOR CW ROTATION
FACING MOUNTING END**

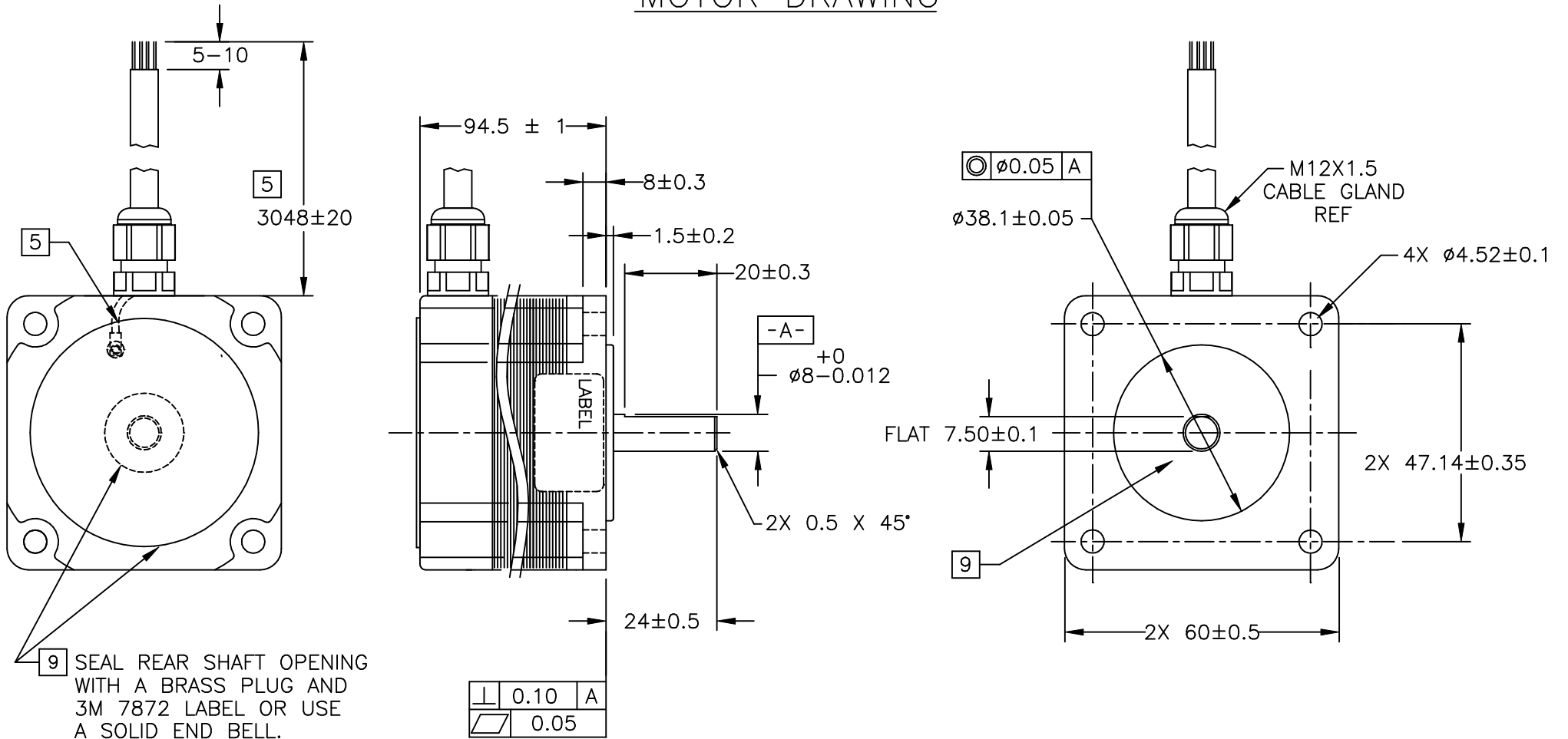
STEP	A+	B+	A-	B-
1	+	+	-	-
2	-	+	+	-
3	-	-	+	+
4	+	-	-	+

CW CCW



CONTRACT NO. -		APPLIED MOTION PRODUCTS, INC.			
APPROVALS	DATE	STEP MOTOR OUTLINE			
DRAWN <i>R.JONEZ</i>	6/19/12				
CHECKED					
APPROVED					
APPROVED		B	COMPUTER DATA BASE DRAWING	DWG NO. HW24-108	REV F
APPROVED		SCALE: NONE	SHEET 1 OF 2		

MOTOR DRAWING



TOLERANCES		THIRD ANGLE PROJECTION		APPLIED MOTION PRODUCTS, INC.				
DECIMALS: MM (INCH) X.XXX = ± (.005) X.XX = ±0.13 (.010) X.X = ±0.25 (.020) ANGLES: MACH. = ±5° CHAM. = ±5°								
COMPUTER DATA BASE DRAWING		APPROVED					STEP MOTOR OUTLINE	
		APPROVALS DRAWN <i>R. JONEZ</i> CHECKED		DATE 6/19/12		B DWG NO. HW24-108 REV F		
				SCALE: NONE SHEET 2 OF 2				