

SPECIFICATIONS:

STEPS PER REVOLUTION: 200	ROTOR INERTIA: 460 G-CM ² (6.51E-03 oz-in-sec ²)NOM
STEP ANGLE: 1.8°	DETENT TORQUE: 0.070 N-m (9.91 oz-in) MIN
STEP TO STEP ACCURACY: ±.09 DEGREES [1], [2]	INSULATION CLASS: B
RADIAL PLAY: 0.02mm MAX W/.5KG RADIAL LOAD	WEIGHT: 1.0 KG (2.2 LB)
END PLAY: 0.08 MAX W/1.0 KG AXIAL LOAD	OPERATING TEMP. RANGE: -20 TO +50 °C
SHAFT RUNOUT: 0.05 T.I.R.	STORAGE TEMP. RANGE: -30 TO +70 °C
TEMP. RISE: 80 °C MAX. [8]	RELATIVE HUMIDITY RANGE: 15 TO 99 %

	[3]	[7]	[1]	[1]	
SPECIFICATION	RESISTANCE PER PHASE OHM ±10%	INDUCTANCE PER PHASE mH ±20%	RATED CURRENT Amp	HOLDING TORQUE N-m Min	HOLDING TORQUE oz-in Min
BI-POLAR SERIES	2.6	6.8	2.12	1.90	269
BI-POLAR PARALLEL	0.65	1.7	4.24	1.90	269
UNI-POLAR	1.3	1.7	3.00	1.35	191

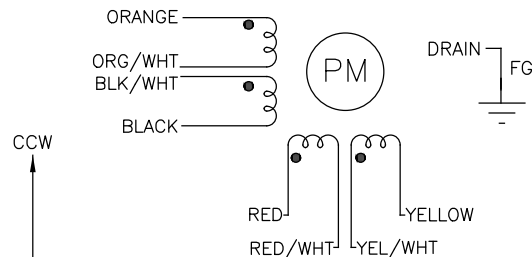
NOTES, UNLESS OTHERWISE SPECIFIED:

- [1] MEASUREMENTS MADE AT RATED CURRENT IN BOTH PHASES.
- [2] BETWEEN ANY TWO ADJACENT FULL STEP POSITIONS.
- [3] MEASUREMENTS MADE AT LEAD ENDS.
- 4. HIPOT 500 VAC, 60 Hz FOR ONE MINUTE.
- 5. LEADS: 8, 22 AWG, 7 STRAND MIN. UL AND CSA APPROVED. 105°C RATED SHIELDED CABLE, 8 COND W/ DRAIN. CABLE MUST MEET AMP SPECIFICATION 666-2126.
- 6. INSULATION RESISTANCE: 100 MEGOHMS MIN AT 500 VDC.
- [7] MEASURED USING AN A.C. INDUCTANCE BRIDGE, AT 1KHz AT LEAD ENDS.
- [8] AS MEASURED BY THE CHANGE IN RESISTANCE METHOD, WITH RATED CURRENT APPLIED TO 2 PHASES; WITH MOTOR AT REST.
- [9] MOTOR TO MEET IP65 STANDARDS. REAR END BELL OPTIONS INCLUDE A SOLID END BELL OR A BRASS PLUG COVERING THE SHAFT BEARING, A 3M LABEL MUST COVER THE BRASS PLUG. CABLE GLAND TO BE NICKEL-PLATED BRASS, ASI P/N 3012215 OR EQUIVALENT.
- 10. THIS MOTOR IS MANUFACTURED IN COMPLIANCE WITH THE CURRENT EU RoHS DIRECTIVE.
- [1] MOTOR LABEL TO INCLUDE "ROHS" COMPLIANT, 'MADE IN (COUNTRY OF ORIGIN)' AND DATE CODE.
- [2] DRAIN WIRE TO BE CONNECTED TO INSIDE OF REAR ENDBELL.
- 13. END BELLS TO BE PROTECTED WITH BLACK COATING.

BIPOLAR, FULL STEP, 2 PHASE ON PARALLEL CONNECTED

SWITCHING SEQUENCE FOR CW ROTATION FACING MOUNTING END

STEP	ORANGE & BLK/WHT	BLACK & ORN/WHT	RED & YEL/WHT	YELLOW & RED/WHT
0	+	-	+	-
1	-	+	+	-
2	-	+	-	+
3	+	-	-	+
4	+	-	+	-

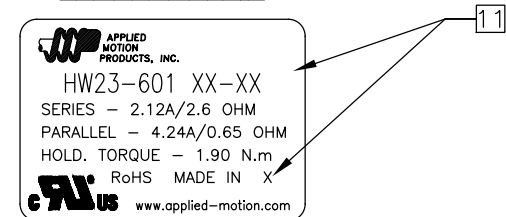


HW23-601

REVISIONS

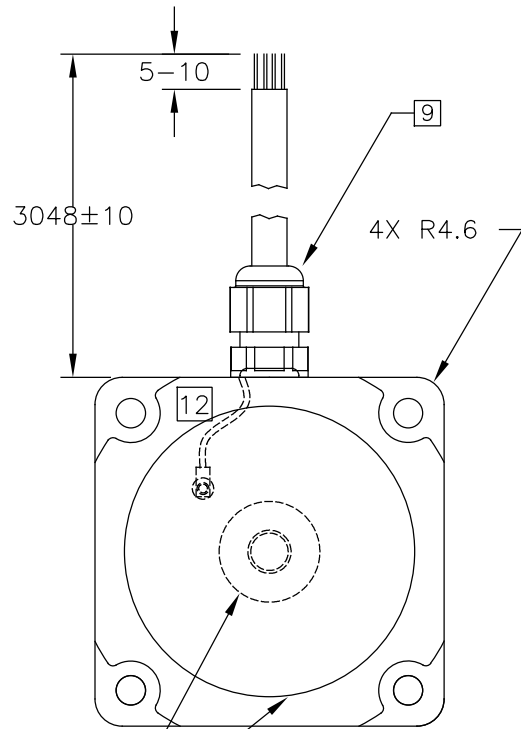
ECO NO.	REV	DESCRIPTION	DATE	APPROVED
6449	A	INITIAL RELEASE	2/8/12	
6356	B	REVISE SPECS	5/2/12	J Kordik
6578	C	105°C CABLE/DRAWING CLEANUP	8/22/12	J Kordik
6723	D	ADD NOTE 13	3/22/13	J Kordik
7373	E	END BELL SEALING OPTIONS	2/12/16	J Kordik
7445	F	REVISE NOTE 10	6/6/16	J Kordik
8250	G	ADD UL MARK	6/5/19	J Kordik

LABEL DETAIL

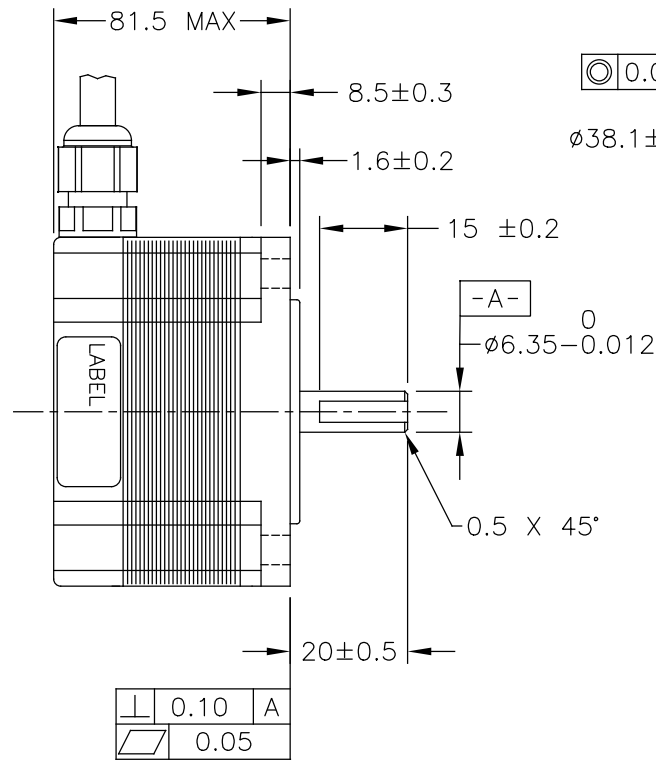


CONTRACT NO. -					
APPROVALS	DATE	<h1>STEP MOTOR OUTLINE</h1>			
DRAWN <i>R.JONEZ</i>	<i>2/8/12</i>				
CHECKED					
APPROVED					
APPROVED		B	COMPUTER DATA BASE DRAWING	DWG NO. HW23-601	REV G
APPROVED		SCALE: NONE	SHEET 1 OF 2		

MOTOR DRAWING



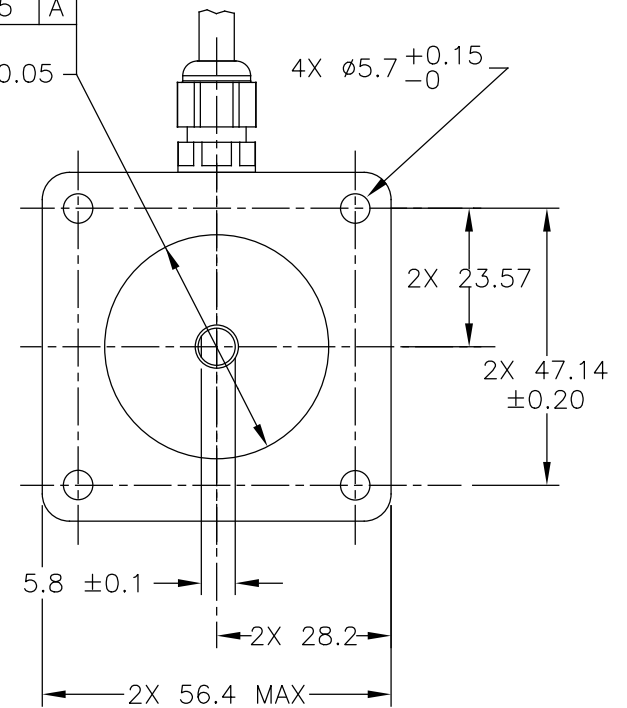
9 SEAL REAR SHAFT OPENING WITH A BRASS PLUG AND 3M 7872 LABEL OR USE A SOLID END BELL.



0.05 A

∅38.1 ± 0.05

4X ∅5.7 ^{+0.15}/₋₀



TOLERANCES		THIRD ANGLE PROJECTION		APPLIED MOTION PRODUCTS, INC.		
DECIMALS: MM (INCH)						
X.XXX = ±	(.005)					
X.XX = ±	(.010)	APPROVALS		DATE		
X.X = ±	(.020)	DRAWN		2/8/11		
ANGLES:		CHECKED		B		
MACH. = ±	5°	APPROVED		DWG NO. HW23-601		
CHAM. = ±	5°			REV G		
COMPUTER DATA BASE DRAWING				SCALE: NONE		
				SHEET 2 OF 2		

STEP MOTOR OUTLINE