

SPECIFICATIONS:

STEPS PER REVOLUTION: 200	ROTOR INERTIA: 260 G-CM ² (3.68E-03 oz-in-sec ²) NOM
STEP ANGLE: 1.8°	DETENT TORQUE: 0.040 N-m (5.66 oz-in) MIN
STEP TO STEP ACCURACY: ±.09 DEGREE [1], [2]	INSULATION CLASS: B
RADIAL PLAY: 0.02 mm MAX W/.5KG RADIAL LOAD	WEIGHT: 0.6 KG (1.32 LB)
END PLAY: 0.08 MAX W/1.0 KG AXIAL LOAD	OPERATING TEMP. RANGE: -20 TO +50 °C
SHAFT RUNOUT: 0.05 T.I.R.	STORAGE TEMP. RANGE: -30 TO +70 °C
TEMP. RISE: 80 °C MAX. [8]	RELATIVE HUMIDITY RANGE: 15 TO 99 %

HW23-598

REVISIONS

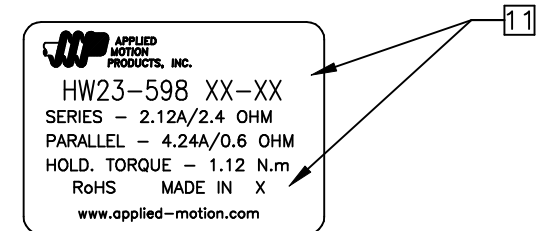
ECO NO.	REV	DESCRIPTION	DATE	APPROVED
6449	A	INITIAL RELEASE	2/8/12	J KORDIK
6356	B	REVISE SPECS	5/2/12	J KORDIK
6578	C	105°C CABLE/DOC CLEANUP	8/22/12	J KORDIK
6723	D	ADD NOTE 13	3/22/13	J KORDIK
7373	E	END BELL SEALING OPTIONS	2/12/16	J KORDIK
7445	F	REVISE NOTE 10	6/6/16	J KORDIK

SPECIFICATION	[3] RESISTANCE PER PHASE OHM ±10%	[7] INDUCTANCE PER PHASE mH ±20%	[1] RATED CURRENT Amp	[1] HOLDING TORQUE N-m Min	[1] HOLDING TORQUE oz-in Min
CONNECTION					
BI-POLAR SERIES	2.4	5.6	2.12	1.12	158
BI-POLAR PARALLEL	0.6	1.4	4.24	1.12	158
UNI-POLAR	1.2	1.4	3.00	0.85	120

NOTES, UNLESS OTHERWISE SPECIFIED:

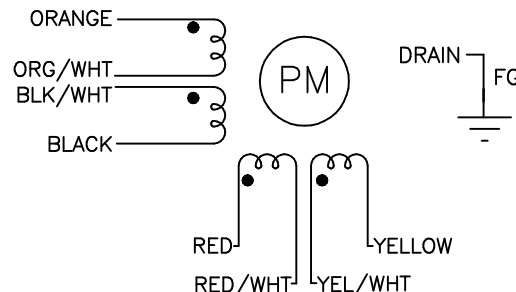
- [1] MEASUREMENTS MADE AT RATED CURRENT IN BOTH PHASES.
- [2] BETWEEN ANY TWO ADJACENT FULL STEP POSITIONS.
- [3] MEASUREMENTS MADE AT LEAD ENDS.
4. HIPOT 500 VAC, 60 Hz FOR ONE MINUTE.
5. LEADS: 8, 22 AWG, 7 STRAND MIN. UL AND CSA APPROVED. 105°C RATED SHIELDED CABLE, 8 COND W/ DRAIN. CABLE MUST MEET AMP SPECIFICATION 666-2126.
6. INSULATION RESISTANCE: 100 MEGOHMS MIN AT 500 VDC.
- [7] MEASURED USING AN A.C. INDUCTANCE BRIDGE, AT 1KHz AT LEAD ENDS.
- [8] AS MEASURED BY THE CHANGE IN RESISTANCE METHOD, WITH RATED CURRENT APPLIED TO 2 PHASES; WITH MOTOR AT REST.
- [9] MOTOR TO MEET IP65 STANDARDS. REAR END BELL OPTIONS INCLUDE A SOLID END BELL OR A BRASS PLUG COVERING THE SHAFT BEARING, A 3M LABEL MUST COVER THE BRASS PLUG. CABLE GLAND TO BE NICKEL-PLATED BRASS, ASI P/N 3012215 OR EQUIVALENT.
10. THIS MOTOR IS MANUFACTURED IN COMPLIANCE WITH THE CURRENT EU RoHS DIRECTIVE.
- [11] MOTOR LABEL TO INCLUDE "ROHS" COMPLIANT, 'MADE IN (COUNTRY OF ORIGIN)' AND DATE CODE.
- [12] DRAIN WIRE TO BE CONNECTED TO INSIDE OF REAR ENDBELL. THE TAPPED HOLE MUST BE SEALED FROM THE OUTSIDE.
13. END BELLS TO BE PROTECTED WITH BLACK COATING.

LABEL DETAIL



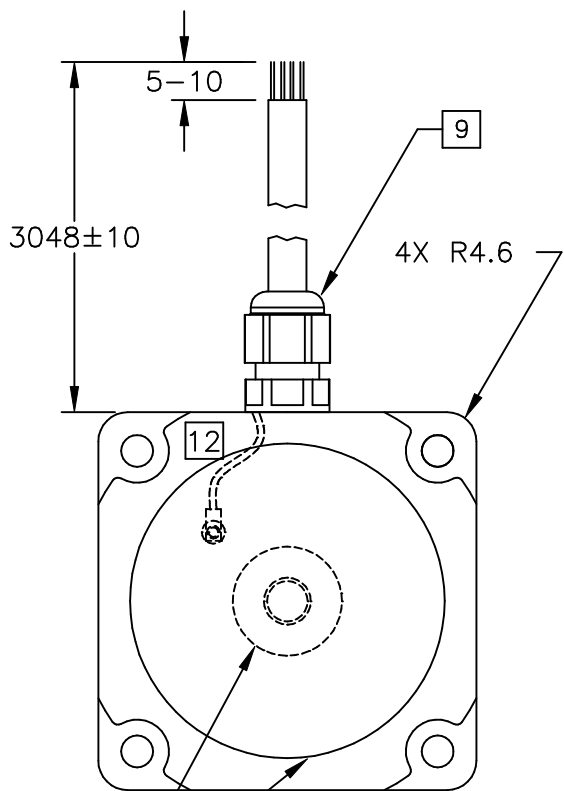
BIPOLAR, FULL STEP, 2 PHASE ON PARALLEL CONNECTED
SWITCHING SEQUENCE FOR CW ROTATION FACING MOUNTING END

STEP	ORANGE & BLK/WHT	BLACK & ORN/WHT	RED & YEL/WHT	YELLOW & RED/WHT
0	+	-	+	-
1	-	+	+	-
2	-	+	-	+
3	+	-	-	+
4	+	-	+	-

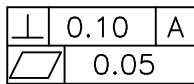
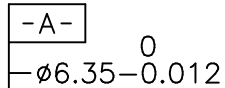
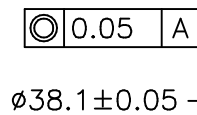
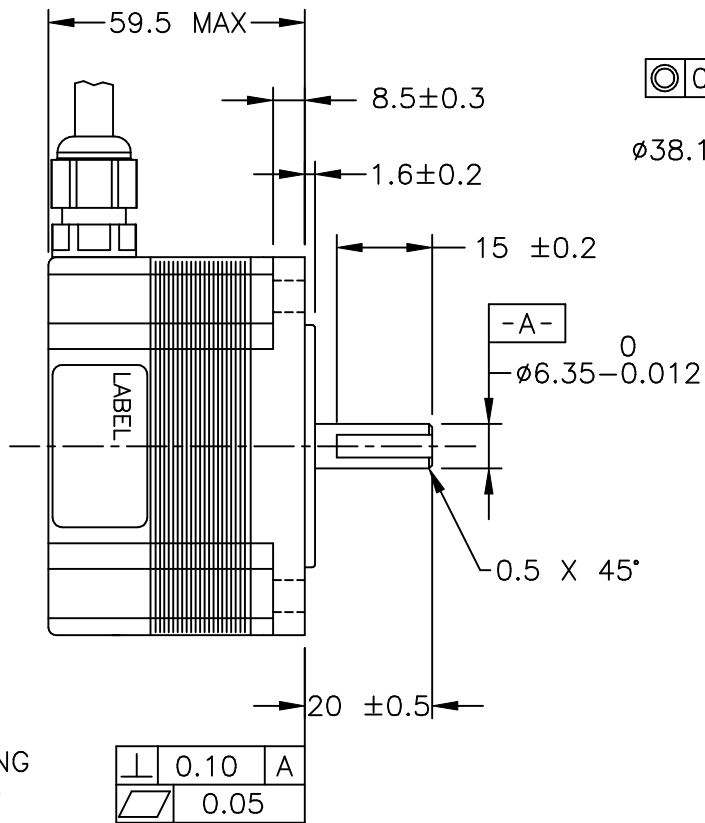


CONTRACT NO. -		APPLIED MOTION PRODUCTS, INC.			
APPROVALS	DATE	STEP MOTOR OUTLINE			
DRAWN <i>R.JONEZ</i>	<i>2/8/12</i>				
CHECKED		B	COMPUTER DATA BASE DRAWING	DWG NO.	REV
APPROVED				HW23-598	F
APPROVED		SCALE: NONE	SHEET 1 OF 2		

MOTOR DRAWING

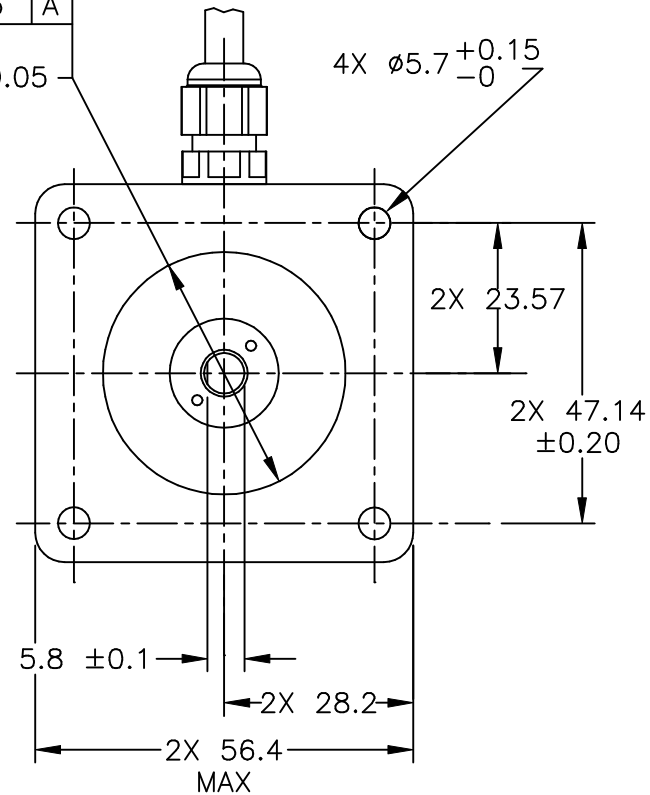


9 SEAL REAR SHAFT OPENING WITH A BRASS PLUG AND 3M 7872 LABEL OR USE A SOLID END BELL.



$\phi 38.1 \pm 0.05$

4X $\phi 5.7 \begin{smallmatrix} +0.15 \\ -0 \end{smallmatrix}$



TOLERANCES		THIRD ANGLE PROJECTION		APPLIED MOTION PRODUCTS, INC.		
DECIMALS: MM (INCH) X.XXX = ± (.005) X.XX = ±0.13 (.010) X.X = ±0.25 (.020)						
ANGLES: MACH. = ±5° CHAM. = ±5°		APPROVALS DATE				
COMPUTER DATA BASE DRAWING		DRAWN R. JONEZ		STEP MOTOR OUTLINE		
		CHECKED		B DWG NO. HW23-598 REV F		
		APPROVED		SCALE: NONE SHEET 2 OF 2		