

**SPECIFICATIONS:**

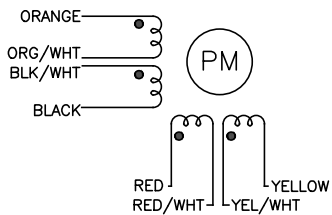
STEPS PER REVOLUTION: 200	ROTOR INERTIA: 460 G-CM <sup>2</sup> (6.51E-03 oz-in-sec <sup>2</sup> )NOM
STEP ANGLE: 1.8°	DETENT TORQUE: 0.070 N-m (9.91 oz-in) MIN
STEP TO STEP ACCURACY: ±.09 DEGREES [1], [2]	INSULATION CLASS: B
RADIAL PLAY: 0.02 mm MAX W/.5KG RADIAL LOAD	WEIGHT: 1.0 KG (2.2 LB)
TEMP. RISE: 80 °C MAX. [8]	OPERATING TEMP. RANGE: -20 TO +50 °C
RELATIVE HUMIDITY RANGE: 15 TO 85 %	STORAGE TEMP. RANGE: -30 TO +70 °C

SPECIFICATION	[3]	[7]	[1]	[1]
CONNECTION	RESISTANCE PER PHASE OHM ±10%	INDUCTANCE PER PHASE mH ±20%	RATED CURRENT Amp	HOLDING TORQUE N-m Min oz-in Min
BI-POLAR SERIES	2.0	6.8	2.12	1.90 269
BI-POLAR PARALLEL	0.5	1.75	4.24	1.90 269
UNI-POLAR	1.0	1.75	3.00	1.35 191

NOTES, UNLESS OTHERWISE SPECIFIED:

- [1] MEASUREMENTS MADE AT RATED CURRENT IN BOTH PHASES.
- [2] BETWEEN ANY TWO ADJACENT FULL STEP POSITIONS.
- [3] MEASUREMENTS MADE AT LEAD ENDS.
- 4. HIPOT 500 VAC, 60 Hz FOR ONE MINUTE.
- 5. LEADS: 8, 22 AWG, 7 STRAND MIN., UL AND CSA APPROVED, UL 1430 OR UL 3265.
- 6. INSULATION RESISTANCE: 100 MEGOHMS MIN AT 500 VDC.
- [7] AS MEASURED ACROSS ANY WINDING USING AN A.C. INDUCTANCE BRIDGE, AT 1 kHz. MEASUREMENTS MADE AT LEAD ENDS.
- [8] AS MEASURED BY THE CHANGE IN RESISTANCE METHOD, WITH RATED VOLTAGE APPLIED TO 2 PHASES; WITH MOTOR AT REST.
- [9] SHAFT OPTION: IF DOUBLE SHAFT REQUIRED ADD "D" TO END OF PART NUMBER. DOUBLE SHAFT REQUIRES ADDED HOLES FOR ENCODER OPTION.
- 10. THIS MOTOR IS MANUFACTURED IN COMPLIANCE WITH THE CURRENT EU RoHS DIRECTIVE.
- [11] MOTOR LABEL TO INCLUDE "ROHS" COMPLIANT, 'MADE IN (COUNTRY OF ORIGIN)' AND DATE CODE.

**WIRING DIAGRAM**



BI-POLAR, FULL STEP, 2 PHASE ON

STEP	ORANGE & BLK/WHT	BLACK & ORG/WHT	RED & YEL/WHT	YELLOW & RED/WHT
0	+	-	+	-
1	-	+	+	-
2	-	+	-	+
3	+	-	-	+
4	+	-	+	-

CW

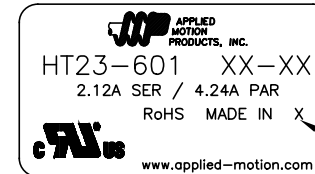
CCW

SWITCHING SEQUENCE FOR ROTATION FACING MOUNTING END.

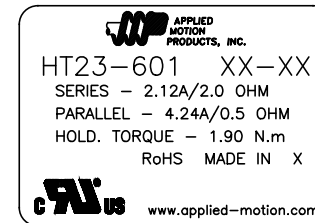
HT23-601

REVISIONS

ECO NO.	REV	DESCRIPTION	DATE	APPROVED
5978	A	INITIAL RELEASE	8/11/09	J KORDIK
5980	B	REVISED HOLE DIMENSION	8/18/09	J KORDIK
5976	C	REVISED HOLE SIZE	8/27/09	J KORDIK
6082	D	ADD #4 HOLES	3/3/10	J KORDIK
6345	E	DRAWING CLEANUP	9/20/11	E RICE
6394	F	REVISE NOTE 5	11/7/11	E RICE
6807	G	REVISE FLANGE THICKNESS	9/9/13	J KORDIK
7247	H	ADD UL TO LABEL	1/26/16	J KORDIK
7445	J	REVISE NOTE 10	6/6/16	J KORDIK
8250	K	REVISE SPECS	6/5/19	J KORDIK
8306	L	REVISE FLANGE THICKNESS	8/14/19	J KORDIK



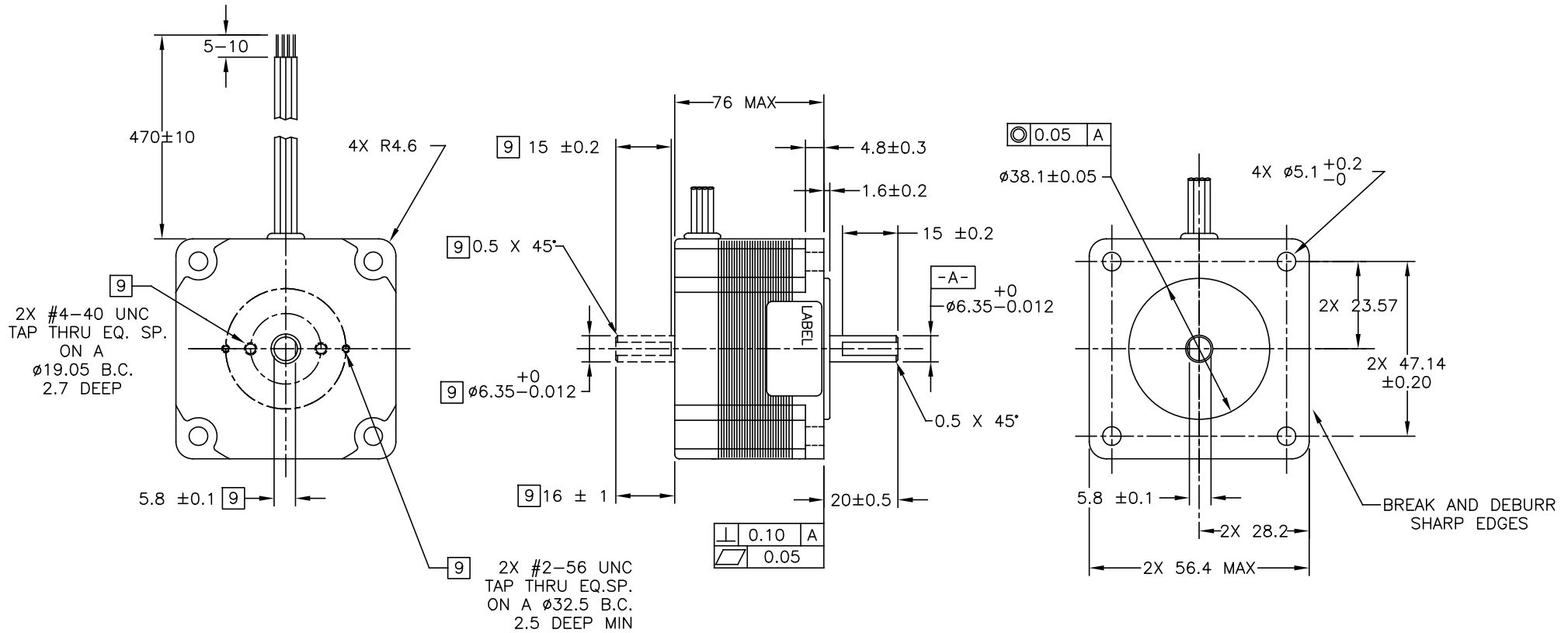
LABEL DETAIL  
BOTH OPTIONS ACCEPTABLE


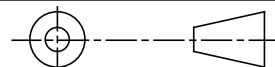


[11]

CONTRACT NO. -		APPLIED MOTION PRODUCTS, INC.	
APPROVALS	DATE	<b>STEP MOTOR OUTLINE</b>	
DRAWN <i>R. JONEZ</i>	8/11/09		
CHECKED <i>E. RICE</i>	9/20/11	<b>B</b>	COMPUTER DATA BASE DRAWING
APPROVED			DWG NO. <b>HT23-601</b>
APPROVED		SCALE: NONE	REV <b>L</b>
			SHEET 1 OF 2

# MOTOR DRAWING



TOLERANCES		THIRD ANGLE PROJECTION		 <b>APPLIED MOTION PRODUCTS, INC.</b>
DECIMALS: MM (INCH)	X.XXX = ±0.013 (.005)			
	X.XX = ±0.25 (.01)	APPROVALS	DATE	<b>STEP MOTOR OUTLINE</b>
	X.X = ±2.5 (0.1)	DRAWN	8/11/09	
ANGLES:	MACH. = ±.5°	CHECKED		
	CHAM. = ±5°	APPROVED		<b>B</b> DWG NO. <b>HT23-601</b> REV <b>L</b>
COMPUTER DATA	BASE DRAWING	SCALE: NONE		SHEET 2 OF 2