

SPECIFICATIONS:

STEPS PER REVOLUTION: 200	ROTOR INERTIA: 460 G-CM ² (6.51E-03 oz-in-sec ²)NOM
STEP ANGLE: 1.8°	DETTENT TORQUE: 0.070 N-m (9.91 oz-in) MIN
STEP TO STEP ACCURACY: ±0.09 DEGREES [1], [2]	INSULATION CLASS: B
RADIAL PLAY: 0.02 mm MAX W/.5KG RADIAL LOAD	WEIGHT: 1.0 KG (2.2 LB)
END PLAY: 0.08 MAX W/1.0 KG AXIAL LOAD	OPERATING TEMP. RANGE: -20 TO +50 °C
SHAFT RUNOUT: 0.05 T.I.R.	STORAGE TEMP. RANGE: -30 TO +70 °C
TEMP. RISE: 80 °C MAX. [8]	RELATIVE HUMIDITY RANGE: 15 TO 99 %

	[3]	[7]	[1]	[1]	[1]
SPECIFICATION	RESISTANCE PER PHASE OHM ±10%	INDUCTANCE PER PHASE mH ±20%	RATED CURRENT Amp	HOLDING TORQUE N-m Min	HOLDING TORQUE oz-in Min
BI-POLAR SERIES	2.6	6.8	2.12	1.90	269
BI-POLAR PARALLEL	0.65	1.7	4.24	1.90	269
UNI-POLAR	1.3	1.7	3.00	1.35	191

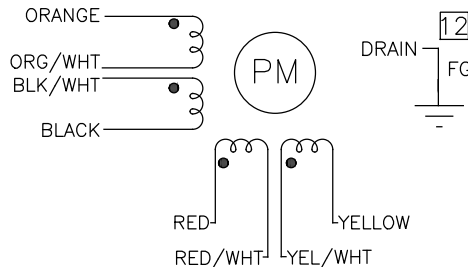
NOTES, UNLESS OTHERWISE SPECIFIED:

- [1] MEASUREMENTS MADE AT RATED CURRENT IN BOTH PHASES.
- [2] BETWEEN ANY TWO ADJACENT FULL STEP POSITIONS.
- [3] MEASUREMENTS MADE AT LEAD ENDS.
- 4. HIPOT 500 VAC, 60 Hz FOR ONE MINUTE.
- [5] LEADS: 8, 22 AWG, 7 STRAND MIN., UL2517 AND CSA APPROVED, 105°C RATED SHIELDED CABLE 666-2126, 8 COND W/DRAIN.
- 6. INSULATION RESISTANCE: 100 MEGOHMS MIN AT 500 VDC.
- [7] MEASURED USING AN A.C. INDUCTANCE BRIDGE, AT 1KHz AT LEAD ENDS.
- [8] AS MEASURED BY THE CHANGE IN RESISTANCE METHOD, WITH RATED CURRENT APPLIED TO 2 PHASES; WITH MOTOR AT REST.
- 9. HIGH TORQUE MOTOR DESIGN, MICROSTEP LAMINATION, INTENDED FOR USE WITH 80VDC DRIVES WHEN WINDINGS CONNECTED IN PARALLEL AND WITH 160VDC DRIVES WHEN WINDINGS CONNECTED IN SERIES.
- 10. THIS MOTOR IS MANUFACTURED IN COMPLIANCE WITH THE CURRENT EU RoHS DIRECTIVE.
- [1] MOTOR LABEL TO INCLUDE "ROHS" COMPLIANT, 'MADE IN (COUNTRY OF ORIGIN)' AND DATE CODE.
- [2] DRAIN WIRE TO BE CONNECTED TO INSIDE OF REAR ENDBELL.
- [3] CABLE GLAND TO BE NICKEL-PLATED BRASS, ASI P/N 3012215 OR EQUIVALENT.

BIPOLAR, FULL STEP, 2 PHASE ON PARALLEL CONNECTED

SWITCHING SEQUENCE FOR CW ROTATION FACING MOUNTING END

STEP	ORANGE & BLK/WHT	BLACK & ORN/WHT	RED & YEL/WHT	YELLOW & RED/WHT
0	+	-	+	-
1	-	+	+	-
2	-	+	-	+
3	+	-	-	+
4	+	-	+	-

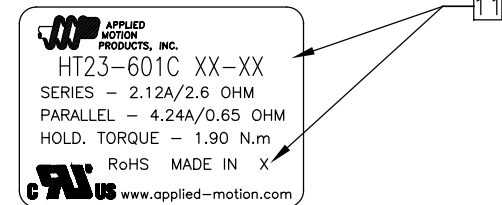


HT23-601C

REVISIONS

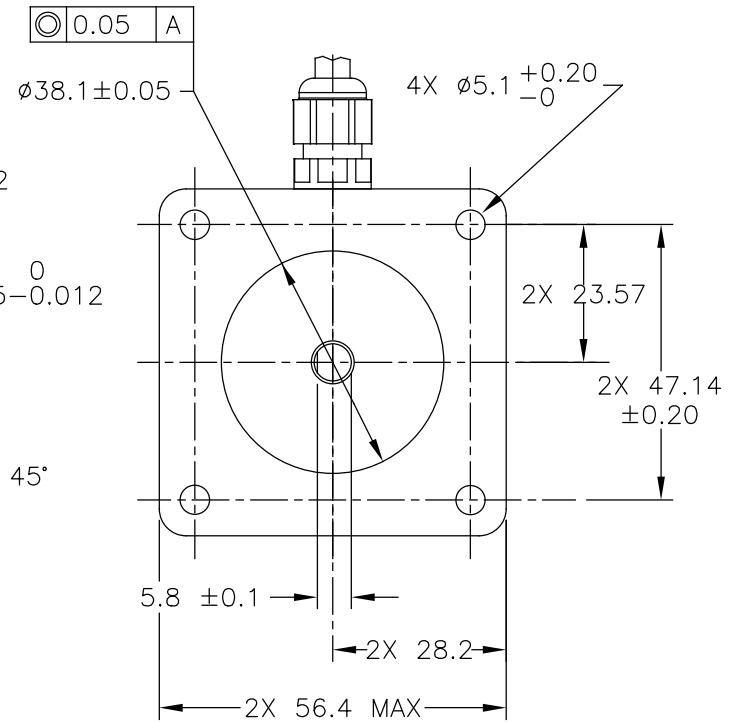
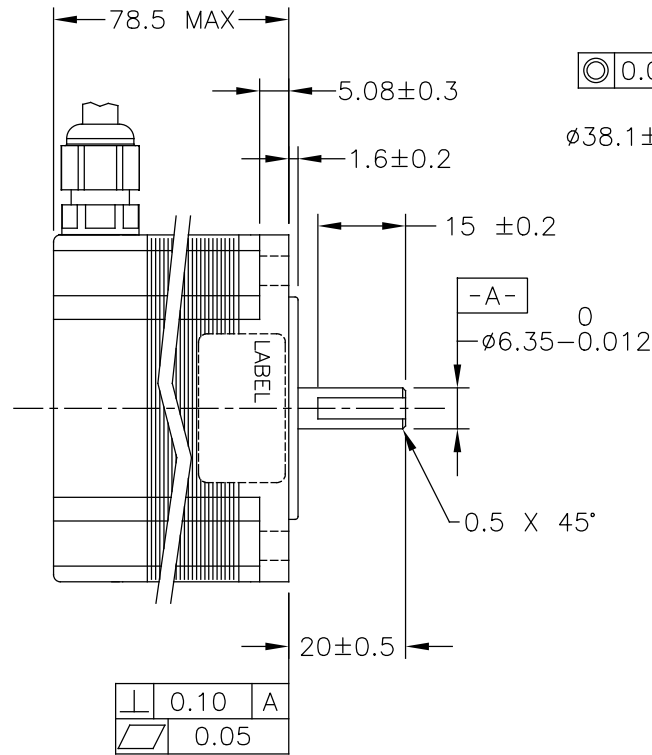
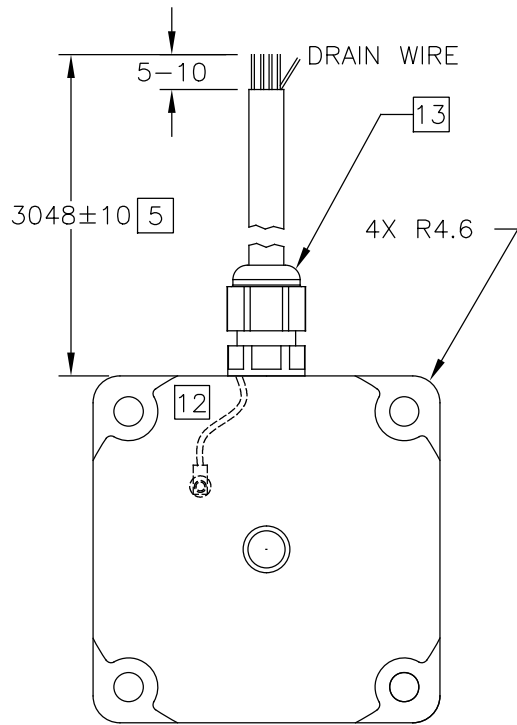
ECO NO.	REV	DESCRIPTION	DATE	APPROVED
6604	A	INITIAL RELEASE	10/29/12	J.KORDIK
6728	B	ADD CABLE GLAND	4/3/13	S.Lovejoy
7445	C	REVISE NOTE 10	6/6/16	J.KORDIK
8250	D	ADD UL TO LABEL, MTG TAB THK	6/5/19	J.KORDIK

LABEL DETAIL



CONTRACT NO. -		APPLIED MOTION PRODUCTS, INC.		
APPROVALS	DATE	STEP MOTOR OUTLINE		
DRAWN <i>R.JONEZ</i>	10/4/12			
CHECKED		B	COMPUTER DATA BASE DRAWING	DWG NO. HT23-601C
APPROVED			REV D	
APPROVED		SCALE: NONE	SHEET 1 OF 2	

MOTOR DRAWING



TOLERANCES		THIRD ANGLE PROJECTION		APPLIED MOTION PRODUCTS, INC.	
DECIMALS: MM (INCH)					
X.XXX = ± (.005)					
X.XX = ±0.13 (.010)		APPROVALS		DATE	
X.X = ±0.25 (.020)		DRAWN		10/4/12	
ANGLES:		CHECKED		REV	
MACH. = ±.5°		APPROVED		D	
CHAM. = ±5°		COMPUTER DATA BASE DRAWING		STEP MOTOR OUTLINE	
		SCALE: NONE		DWG NO. HT23-601C	
		SHEET 2 OF 2			