

SPECIFICATIONS:

STEPS PER REVOLUTION: 200	ROTOR INERTIA: 135 G-CM ² (0.73 OZ-IN ²) NOM
STEP ANGLE: 1.8°	DETENT TORQUE: 224 G-CM (3.11 OZ-IN) MIN
STEP TO STEP ACCURACY: ±5 % [1], [2]	INSULATION CLASS: B
POSITIONAL ACCURACY: ±5 % [1], [3]	BEARINGS: ABEC 3, DOUBLE SHIELDED
HYSTERESIS: - %	WEIGHT: 0.42 KG (0.92 LB)
SHAFT RUNOUT: 0.05 T.I.R.	TEMP. RISE: 80 °C MAX. [8]
RADIAL PLAY: 0.02 MAX W/A 0.5KG RADIAL LOAD	OPERATING TEMP. RANGE: -20 TO +50 °C
END PLAY: 0.08 MAX W/A 0.5KG AXIAL LOAD	STORAGE TEMP. RANGE: -30 TO +70 °C
	RELATIVE HUMIDITY RANGE: 15 TO 85 %

HT23-595D-ZAA

REVISIONS

ECO NO.	REV	DESCRIPTION	DATE	APPROVED
6941	A	INITIAL RELEASE	6/16/14	J KORDIK
8034	B	CHG REAR SHAFT LENGTH/TYPO	8/28/18	M.Maroney

[7]

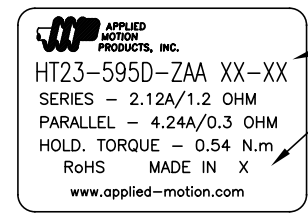
SPECIFICATION	NUMBER OF PHASE	RESISTANCE PER PHASE OHM ±10%	INDUCTANCE PER PHASE mH ±20%	RATED CURRENT Amp	RATED VOLTAGE V	HOLDING TORQUE Nm Min
BI-POLAR SERIES	2	1.2	2.4	2.12	2.5	0.54
BI-POLAR PARALLEL	2	0.3	0.6	4.24	1.3	0.54
UNI-POLAR	4	0.6	0.6	3.00	1.8	0.38

[1]

NOTES, UNLESS OTHERWISE SPECIFIED:

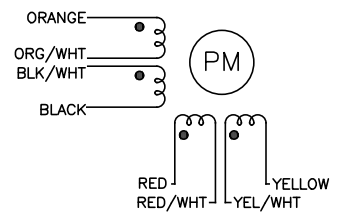
- [1] MEASUREMENTS MADE AT RATED CURRENT IN EACH PHASE.
- [2] BETWEEN ANY TWO ADJACENT STEP POSITIONS.
- [3] MAXIMUM ERROR IN 360°.
- 4. HIPOT 500 VAC, 60 Hz FOR ONE MINUTE.
- 5. LEADS: 8, 22AWG, 7 STRAND MIN., UL AND CSA APPROVED, UL 1430 OR UL 3265.
- 6. INSULATION RESISTANCE: 100 MEGOHMS MIN AT 500 VDC.
- [7] AS MEASURED USING AN A.C. INDUCTANCE BRIDGE, AT 1KHz.
- [8] AS MEASURED BY THE CHANGE IN RESISTANCE METHOD, WITH RATED VOLTAGE APPLIED TO 2 PHASES; WITH MOTOR AT REST.
- [9] ENCODER 970-1001 INSTALLED PER AMP ASSEMBLY PRACTICES. ENCODER CABLE SOLD SEPARATELY..
- 10. THIS MOTOR TO BE MANUFACTURED IN COMPLIANCE WITH EU DIRECTIVE "ROHS 2002/95/EC".
- [11] MOTOR LABEL TO INCLUDE "ROHS" COMPLIANT, 'MADE IN (COUNTRY OF ORIGIN)' AND DATE CODE.

LABEL DETAIL



[11]

WIRING DIAGRAM



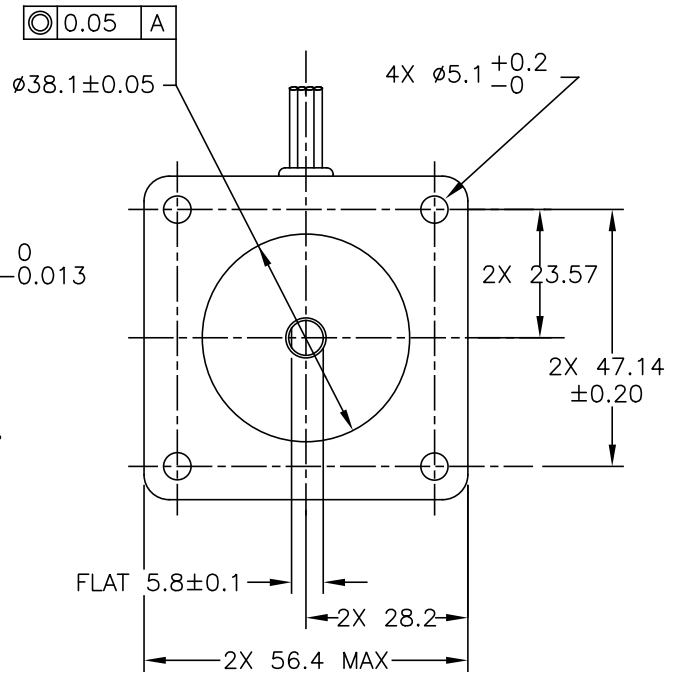
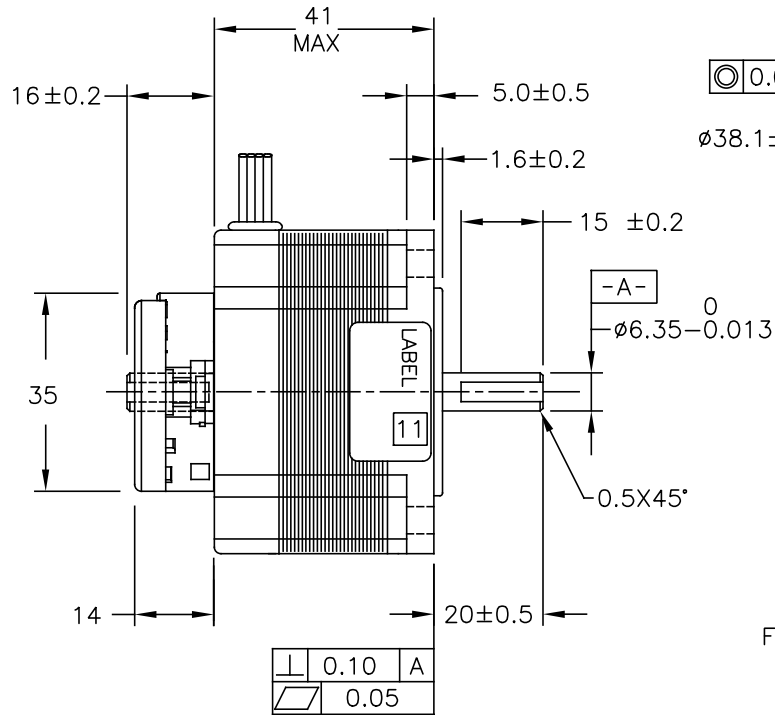
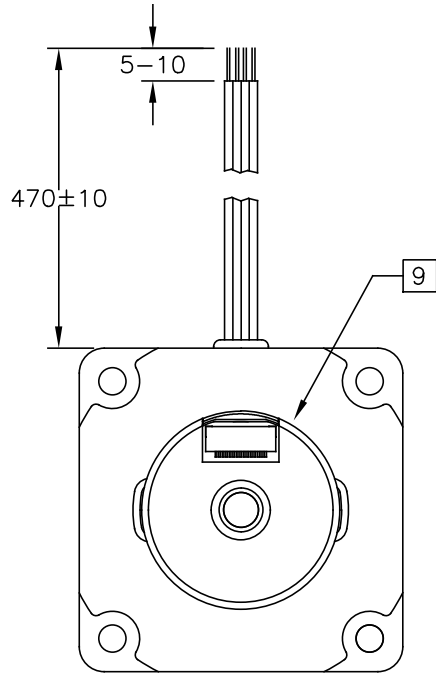
DRIVE SEQUENCE MODEL
BI-POLAR FULL STEP

STEP	ORANGE & BLK/WHT	BLACK & ORG/WHT	RED & YEL/WHT	YELLOW & RED/WHT
1	+	-	+	-
2	-	+	+	-
3	-	+	-	+
4	+	-	-	+

CW (CLOCKWISE) AND CCW (COUNTER-CLOCKWISE) ROTATION WHEN SEEN FROM THE FLANGE SIDE OF THE MOTOR

CONTRACT NO. -			
APPROVALS		DATE	
DRAWN R.JONEZ		3/18/14	
CHECKED			
APPROVED			
APPROVED			
B		COMPUTER DATA BASE DRAWING	DWG NO. HT23-595D-ZAA
			REV B
SCALE: NONE		SHEET 1 OF 2	

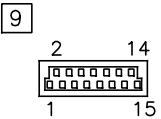
MOTOR DRAWING



ENCODER RESOLUTION: 2000 cpr
WITH MARKER PULSE.

ENCODER PINOUTS

PIN	SIGNAL
1	CH A
2	CH A-
3	CH B
4	CH B-
5	INDEX
6	INDEX-
7	N/C
8	N/C
9	N/C
10	N/C
11	N/C
12	N/C
13	+Vcc
14	GND
15	N/C



<p>TOLERANCES</p> <p>DECIMALS: MM (INCH)</p> <p>X.XXX = ± (.005)</p> <p>X.XX = ±0.13 (.010)</p> <p>X.X = ±0.25 (.020)</p> <p>ANGLES:</p> <p>MACH. = ±.5°</p> <p>CHAM. = ±5°</p> <p>COMPUTER DATA BASE DRAWING</p>	<p>THIRD ANGLE PROJECTION</p>		<p>APPLIED MOTION PRODUCTS, INC.</p>	
	<p>APPROVALS</p> <p>DRAWN <i>R. JONEZ</i></p> <p>CHECKED</p> <p>APPROVED</p>	<p>DATE</p> <p><i>3/18/14</i></p>		
	<p>APPROVALS</p> <p>DRAWN <i>R. JONEZ</i></p> <p>CHECKED</p> <p>APPROVED</p>		<p>DATE</p> <p><i>3/18/14</i></p>	
	<p>APPROVALS</p> <p>DRAWN <i>R. JONEZ</i></p> <p>CHECKED</p> <p>APPROVED</p>		<p>DATE</p> <p><i>3/18/14</i></p>	<p>APPLIED MOTION PRODUCTS, INC.</p> <p>STEP MOTOR OUTLINE</p> <p>B DWG NO. HT23-595D-ZAA REV B</p> <p>SCALE: NONE SHEET 2 OF 2</p>