

SPECIFICATIONS:

STEPS PER REVOLUTION: 200	ROTOR INERTIA: 135 G-CM ² (1.91E-3 oz-in-sec ²)NOM
STEP ANGLE: 1.8°	DETENT TORQUE: 0.022 N-m (3.11 OZ-IN)MIN
STEP TO STEP ACCURACY: ±.09 DEGREES [1], [2]	INSULATION CLASS: B
RADIAL PLAY: 0.02mm MAX W/.5KG RADIAL LOAD	WEIGHT: 0.42 KG (0.93 LB)
TEMP. RISE: 80 °C MAX. [8]	OPERATING TEMP. RANGE: -20 TO +50 °C
RELATIVE HUMIDITY RANGE: 15 TO 85 %	STORAGE TEMP. RANGE: -30 TO +70 °C

	[3]	[7]	[1]	[1]	[1]
SPECIFICATION	RESISTANCE PER PHASE OHM ±10%	INDUCTANCE PER PHASE mH ±20%	RATED CURRENT Amp	HOLDING TORQUE N-m Min	HOLDING TORQUE oz-in Min
CONNECTION					
BI-POLAR SERIES	2.8	5.6	1.41	0.54	76.5
BI-POLAR PARALLEL	0.7	1.4	2.83	0.54	76.5
UNI-POLAR	1.4	1.4	2.00	0.39	55.2

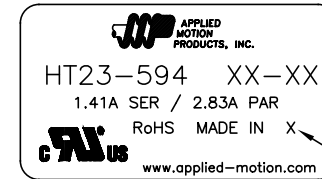
NOTES, UNLESS OTHERWISE SPECIFIED:

- [1] MEASUREMENTS MADE AT RATED CURRENT IN BOTH PHASES.
- [2] BETWEEN ANY TWO ADJACENT FULL STEP POSITIONS.
- [3] MEASUREMENTS MADE AT LEAD ENDS.
- 4. HIPOT 500 VAC, 60 Hz FOR ONE MINUTE.
- 5. LEADS: 8, 22 AWG, 7 STRAND MIN., UL AND CSA APPROVED, UL 1430 OR UL 3265.
- 6. INSULATION RESISTANCE: 100 MEGOHMS MIN AT 500 VDC.
- [7] AS MEASURED ACROSS ANY WINDING USING AN A.C. INDUCTANCE BRIDGE, AT 1 kHz. MEASUREMENTS MADE AT LEAD ENDS.
- [8] AS MEASURED BY THE CHANGE IN RESISTANCE METHOD, WITH RATED VOLTAGE APPLIED TO 2 PHASES; WITH MOTOR AT REST.
- [9] SHAFT OPTION: IF DOUBLE SHAFT REQUIRED ADD "D" TO END OF PART NUMBER. DOUBLE SHAFT REQUIRES ADDED HOLES FOR ENCODER OPTION.
- 10. THIS MOTOR IS MANUFACTURED IN COMPLIANCE WITH THE CURRENT EU RoHS DIRECTIVE.
- [11] MOTOR LABEL TO INCLUDE "ROHS" COMPLIANT, 'MADE IN (COUNTRY OF ORIGIN)' AND DATE CODE.

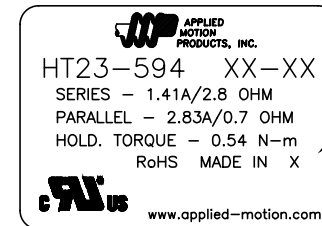
HT23-594

REVISIONS

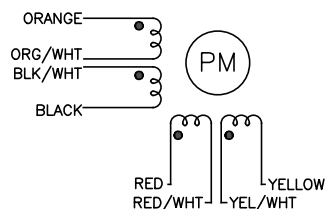
ECO NO.	REV	DESCRIPTION	DATE	APPROVED
5976	A	INITIAL RELEASE	8/28/09	J KORDIK
6090	B	STANDARDIZE ENCODER HOLES	3/29/10	J KORDIK
6345	C	DRAWING CLEANUP	9/20/11	E RICE
6394	D	REVISE NOTE 5	11/7/11	E RICE
6807	E	REVISE FLANGE THICKNESS	9/9/13	J KORDIK
7247	F	ADD UL TO LABEL	1/26/16	J KORDIK
7445	G	REVISE NOTE 10	6/6/16	J KORDIK
8306	H	MOUNTING TABS THICKNESS	8/14/19	J KORDIK



LABEL DETAIL
BOTH OPTIONS ACCEPTABLE [11]

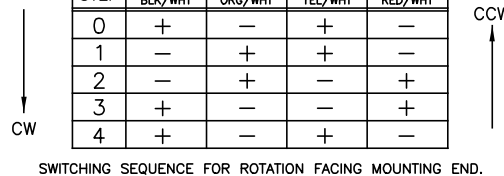


WIRING DIAGRAM



BI-POLAR, FULL STEP, 2 PHASE ON

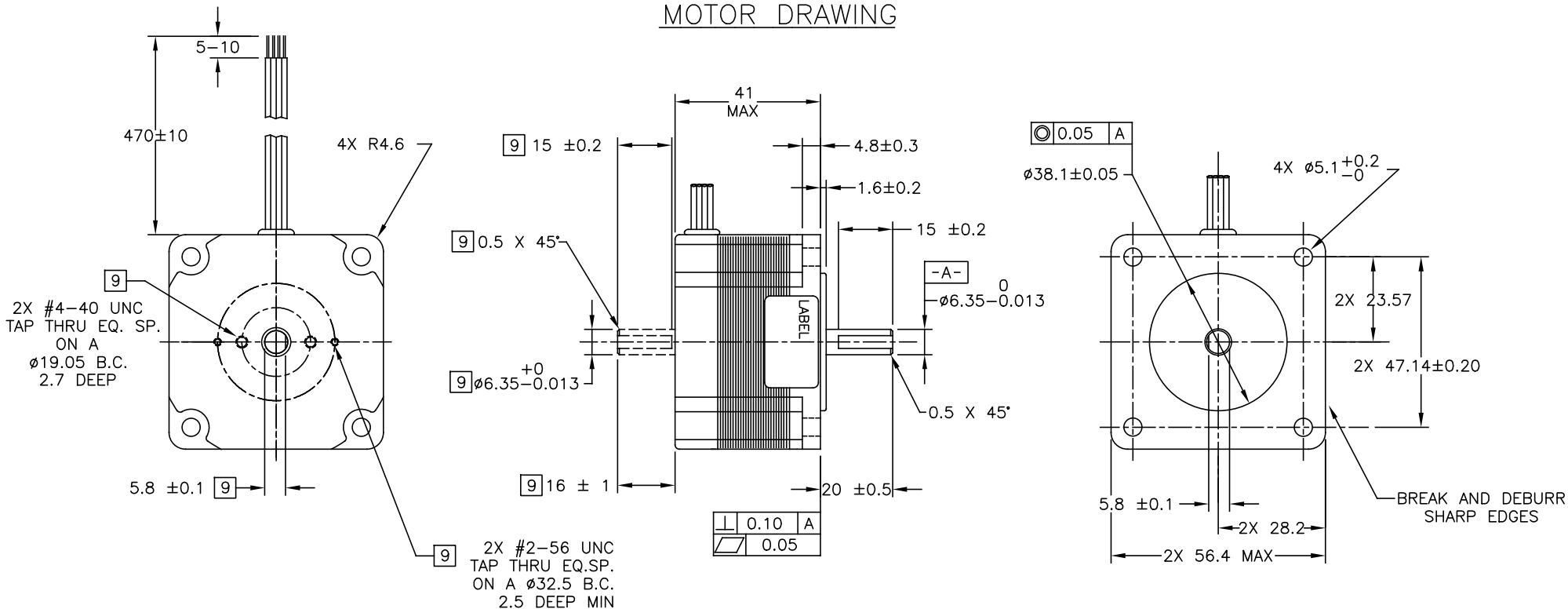
STEP	ORANGE & BLK/WHT	BLACK & ORG/WHT	RED & YEL/WHT	YELLOW & RED/WHT
0	+	-	+	-
1	-	+	+	-
2	-	+	-	+
3	+	-	-	+
4	+	-	+	-

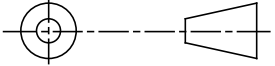



SWITCHING SEQUENCE FOR ROTATION FACING MOUNTING END.

CONTRACT NO. -		APPLIED MOTION PRODUCTS, INC.			
APPROVALS	DATE	STEP MOTOR OUTLINE			
DRAWN <i>R. JONEZ</i>	8/19/09				
CHECKED <i>E. RICE</i>	9/20/11	B	COMPUTER DATA BASE DRAWING	DWG NO. HT23-594	REV H
APPROVED			SCALE: NONE	SHEET 1 OF 2	

MOTOR DRAWING



TOLERANCES DECIMALS: MM (INCH) X.XXX = ± 0.013 (.005) X.XX = ± 0.25 (.01) X.X = ± 2.5 (0.1) ANGLES: MACH. = $\pm 5^\circ$ CHAM. = $\pm 5^\circ$	THIRD ANGLE PROJECTION 		 APPLIED MOTION PRODUCTS, INC.		
	APPROVALS DRAWN <i>R. JONEZ</i> CHECKED	DATE <i>8/19/09</i>	STEP MOTOR OUTLINE		
	COMPUTER DATA BASE DRAWING	APPROVED	B	DWG NO. HT23-594	REV H
		SCALE: NONE		SHEET 2 OF 2	