

SPECIFICATIONS:

STEPS PER REVOLUTION: 200	ROTOR INERTIA: 35.0 G-CM ² (0.19 OZ-IN ²) REF
STEP ANGLE: 1.8°	HOLDING TORQUE: 1.6KG-CM (22.2 OZ-IN)MIN ¹
STEP TO STEP ACCURACY: ±5 % 1, 2	DETENT TORQUE: 36 G-CM (0.5 OZ-IN) MIN
POSITIONAL ACCURACY: ±5 % 1, 3	
HYSTERESIS: - %	INSULATION CLASS: B
WINDING RESISTANCE: 4.2 OHM ±10% AT 25° ⁷	BEARINGS: ABEC 3, DOUBLE SHIELDED
WINDING INDUCTANCE: 2.8 mH ± 20% ⁸	WIEGHT: 200 G (7.0 OZ) APPROXIMATE
PHASE VOLTAGE: 4.0 VDC	TEMP. RISE: 80°C MAX. ⁹
PHASE CURRENT: .95 AMP (RATED)	OPERATING TEMP. RANGE: -10 TO 40 °C
	STORAGE TEMP. RANGE: -40 TO 70 °C
SHAFT RUNOUT: 0.013 T.I.R.	RELATIVE HUMIDITY RANGE: 5 TO 95 %
RADIAL PLAY: 0.025 MAX WITH .5KG RADIAL LOAD.	
END PLAY: 0.075 MAX WITH 1.0KG AXIAL LOAD.	

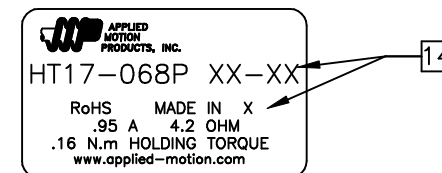
HT17-068P

REVISIONS

ECO NO.	REV	DESCRIPTION	DATE	APPROVED
	A	INITIAL RELEASE	5/25/95	<i>K. Kordik</i>
4187	B	ADD MOD		
6018	C	ADD ELECTRICAL DATA	10/29/09	<i>J Kordik</i>
6042	D	REVISE ENCODER HOLES	12/23/09	<i>J Kordik</i>
6062	E	STANDARDIZE ENC HOLES	6/16/10	<i>J Kordik</i>

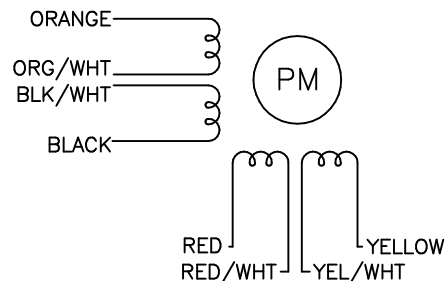
NOTES, UNLESS OTHERWISE SPECIFIED:

- ¹ MEASUREMENTS MADE AT RATED CURRENT IN EACH PHASE.
- ² BETWEEN ANY TWO ADJACENT STEP POSITIONS.
- ³ MAXIMUM ERROR IN 360°.
- 4. HIPOT 500 VAC FOR ONE MINUTE.
- 5. LEADS: 8 ,AWG 26,7 STRAND MIN.,UL AND CSA APPROVED, UL 3265.
- 6. INSULATION RESISTANCE: 100 MEGOHMS MIN AT 500 VDC.
- ⁷ AS MEASURED ACROSS ANY WINDING.
- ⁸ AS MEASURED ACROSS ANY WINDING USING AN A.C. INDUCTANCE BRIDGE (1 KHz).
- ⁹ AS MEASURED BY THE CHANGE IN RESISTANCE METHOD, WITH RATED VOLTAGE APPLIED TO 2 PHASES; WITH MOTOR AT REST.
- 10. HIGH TORQUE MOTOR DESIGN.
- 11. ROTOR & STATOR LAMINATION MATERIAL: 0.5mm thk, SEE AMP STD SPEC #1500-062.
- ¹² IF DOUBLE SHAFT IS REQUIRED, ADD "DP" TO END OF BASE PART NUMBER.
- 13. THIS MOTOR TO BE MANUFACTURED IN COMPLIANCE WITH EU DIRECTIVE "ROHS 2002/95/EC".
- ¹⁴ MOTOR LABEL TO INCLUDE "ROHS" COMPLIANT, 'MADE IN (COUNTRY OF ORIGIN)' AND DATE CODE.

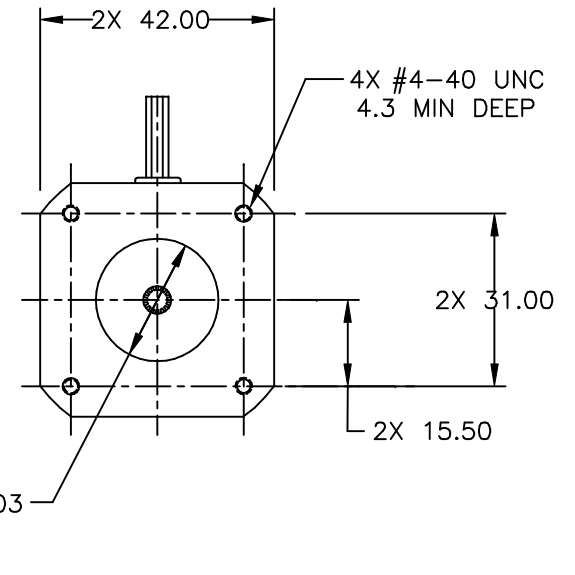
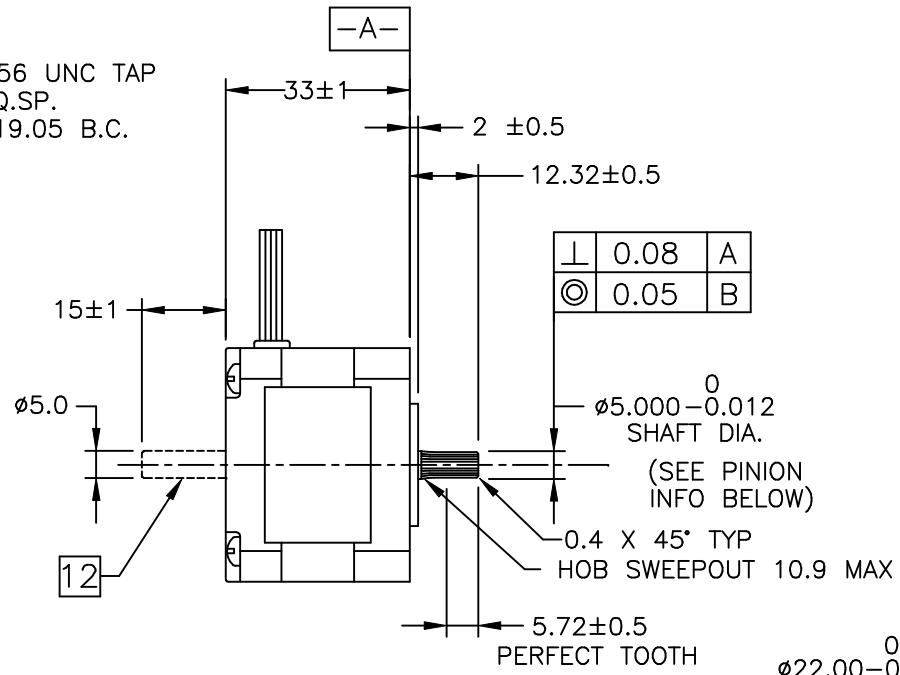
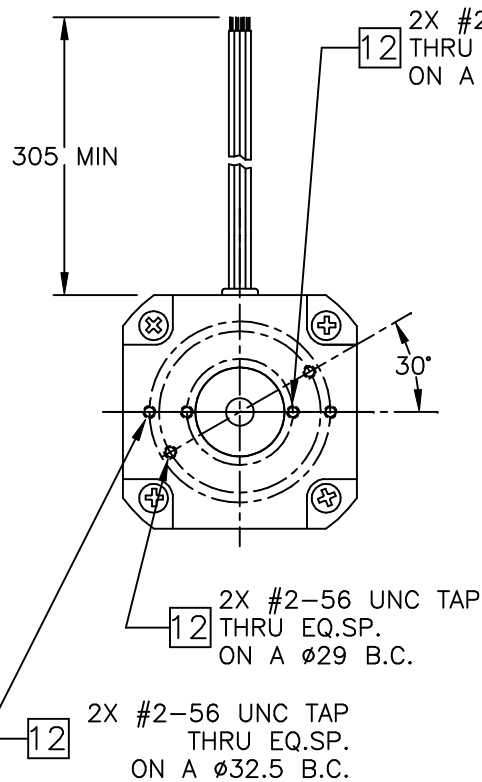


SWITCHING SEQUENCE FOR CW ROTATION
FACING MOUNTING END

STEP	ORANGE	BLACK	RED	YELLOW
0	+	-	+	-
1	-	+	+	-
2	-	+	-	+
3	+	-	-	+
4	+	-	+	-



CONTRACT NO. CAT		APPLIED MOTION PRODUCTS, INC.		
APPROVALS	DATE	<h2>STEP MOTOR OUTLINE</h2>		
DRAWN <i>R. JONEZ</i>	<i>10/22/09</i>			
CHECKED		B	COMPUTER DATA BASE DRAWING	DWG NO. HT17-068P
APPROVED			REV E	
APPROVED		SCALE: NONE	SHEET 1 OF 2	



GEAR DATA	
AGMA CLASS	10 MIN
NO. TEETH	15
DIAMETRAL PITCH	96
PITCH DIA	4.10-0.025
ANGLE	20
OUTSIDE DIAMETER	4.628-0.05
MOD.	+5
MATERIAL	A-286 OR SUS 303

TOLERANCES		THIRD ANGLE PROJECTION		APPROVALS		DATE
DECIMALS: MM (INCH)						5/24/95
X.XXX = ±	(.005)					
X.XX = ±0.13	(.010)	DRAWN		R. BARRICK		5/24/95
X.X = ±0.25	(.020)	CHECKED		B. Corser		5/24/95
ANGLES:		APPROVED		K. Kordik		5/25/95
MACH. = ±.5°		COMPUTER DATA		SCALE: NONE		SHEET 2 OF 2
CHAM. = ±5°		BASE DRAWING		DWG NO. HT17-068P		



STEP MOTOR OUTLINE

B DWG NO. HT17-068P REV E