

SPECIFICATIONS:

NUMBER OF PHASES: 2	ROTOR INERTIA: 18 g-cm ² (0.10 oz-in ²) NOM
STEPS PER REVOLUTION: 200	DETENT TORQUE: 8 mNm (1.13 oz-in) MIN
STEP ANGLE: 1.8°	BEARINGS: 695ZZ
STEP TO STEP ACCURACY: ±0.09°	INSULATION CLASS: B
POSITIONAL ACCURACY: ±0.09°	HYSTERESIS: N/A%
SHAFT RUNOUT: 0.03 mm T.I.R. MAX	TEMP. RISE: 80 °C MAX. 9
RADIAL PLAY: 0.02 mm MAX (.5KG RADIAL LOAD)	OPERATING TEMP. RANGE: -20 TO +50 °C
END PLAY: 0.08 mm MAX (.5KG AXIAL LOAD)	STORAGE TEMP. RANGE: -30 TO +70 °C
MAXIMUM RADIAL LOAD: 15 N (3.37lb)	RELATIVE HUMIDITY RANGE: 15 TO 85 %
MAXIMUM AXIAL LOAD: 8 N (1.80lb)	WEIGHT: 0.2 kg (0.44 lb)

HT11-021

REVISIONS

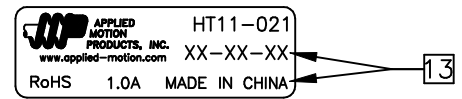
ECO NO.	REV	DESCRIPTION	DATE	APPROVED
7000	A	PRELIMINARY RELEASE	5/29/14	J.KORDIK
-	-	-	-	-
-	-	-	-	-
-	-	-	-	-
-	-	-	-	-
-	-	-	-	-
-	-	-	-	-
-	-	-	-	-
-	-	-	-	-
-	-	-	-	-
-	-	-	-	-
-	-	-	-	-
-	-	-	-	-
-	-	-	-	-

SPECIFICATION	7	8	1	1	
	RESISTANCE PER PHASE (ohm ±10%)	INDUCTANCE PER PHASE (mH ±20%)	RATED CURRENT (amp)	HOLDING TORQUE (Nm MIN)	HOLDING TORQUE (oz-in Min)
CONNECTION					
BI-POLAR	2	2.4	1.0	0.10	14.16

NOTES, UNLESS OTHERWISE SPECIFIED:

- 1 MEASUREMENTS MADE AT RATED CURRENT IN EACH PHASE.
- 2 BETWEEN ANY TWO ADJACENT FULL STEP POSITIONS.
- 3 MAXIMUM ERROR IN 360°.
- 4. HIPOT 500 VAC, 60 Hz FOR ONE MINUTE.
- 5 LEADS: 4, AWG 26, 7 STRAND MIN., UL AND CSA APPROVED, UL 1007
- 6. INSULATION RESISTANCE: 100 MEGOHMS MIN AT 500 VDC.
- 7 AS MEASURED ACROSS EACH PHASE.
- 8 AS MEASURED ACROSS EACH PHASE USING AN A.C. INDUCTANCE BRIDGE AT 1 KHz.
- 9 AS MEASURED BY THE CHANGE IN RESISTANCE METHOD, WITH RATED CURRENT APPLIED TO 2 PHASES; WITH MOTOR AT REST.
- 10 ADD "D" TO END OF PART NUMBER IF DOUBLE SHAFT IS REQUIRED. ENCODER HOLES INCLUDED WITH REAR SHAFT VERSION ONLY.
- 11. ROTOR & STATOR LAMINATED CONSTRUCTION.
- 12. THIS MOTOR TO BE MANUFACTURED IN COMPLIANCE WITH EU DIRECTIVE "ROHS 2002/95/EC".
- 13 MOTOR LABEL TO INCLUDE "ROHS" COMPLIANT, AMP P/N, 'MADE IN (COUNTRY OF ORIGIN)', AND DATE CODE.
- 14. HI TORQUE MOTOR DESIGN

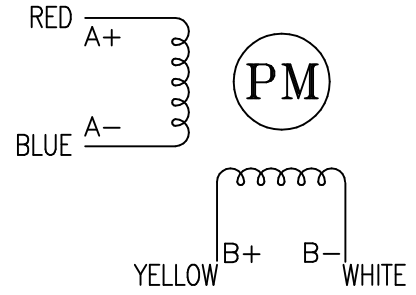
LABEL DETAIL



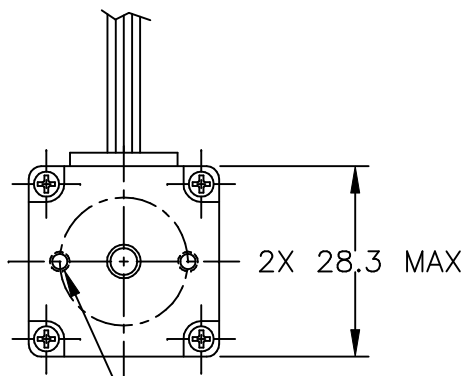
SWITCHING SEQUENCE FOR CW ROTATION
FACING MOUNTING END

STEP	RED	BLUE	YELLOW	WHITE
0	+	-	+	-
1	-	+	+	-
2	-	+	-	+
3	+	-	-	+
4	+	-	+	-

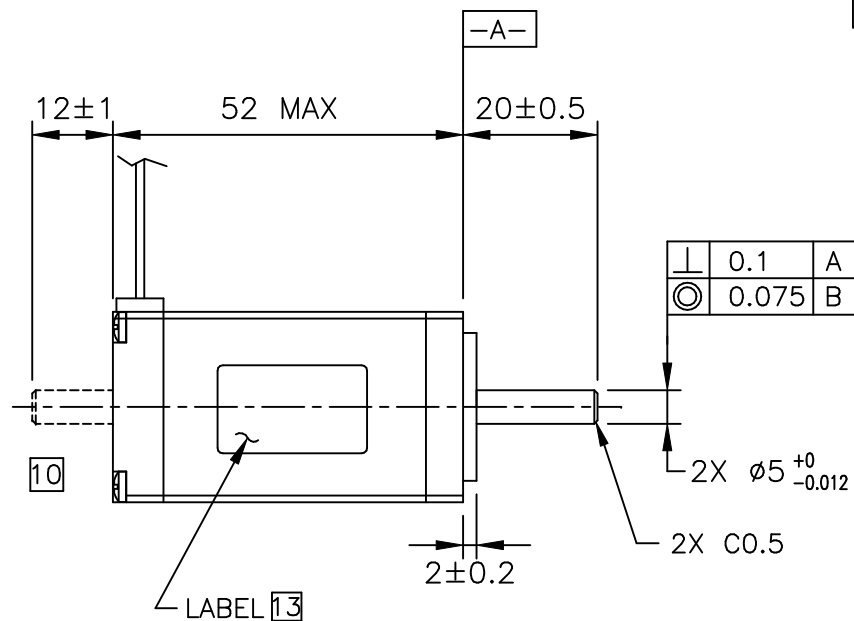
CW
↓



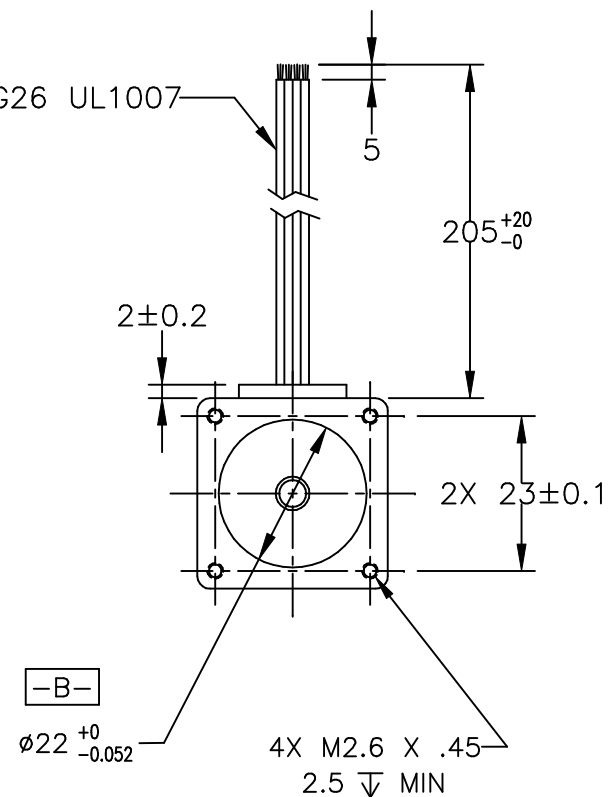
CONTRACT NO. -		APPLIED MOTION PRODUCTS, INC.			
APPROVALS	DATE	STEP MOTOR OUTLINE			
DRAWN K.KESLER	5/23/14				
CHECKED -	-	B	COMPUTER DATA BASE DRAWING	DWG NO. HT11-021	REV A
APPROVED -	-		SCALE: NONE	SHEET 1 OF 2	
APPROVED -	-				


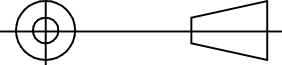


2X #4-40 UNC
ON A $\phi 19.05 \pm 0.1$
BOLT CIRCLE 10



5 AWG26 UL1007



TOLERANCES		THIRD ANGLE PROJECTION		 APPLIED MOTION PRODUCTS, INC.		
*ALL DIMENSIONS IN MM						<h2>STEP MOTOR OUTLINE</h2>
DECIMALS: MM X.XX = ± 0.13 X.X = ± 0.25 ANGLES: MACH. = $\pm 0.5^\circ$ CHAM. = $\pm 5^\circ$						
APPROVALS		DATE		B	DWG NO. HT11-021	
DRAWN		DATE				REV A
K.KESLER		5/23/14				
CHECKED		-				
APPROVED		-		SCALE: NONE SHEET 2 OF 2		
COMPUTER DATA BASE DRAWING		-				