

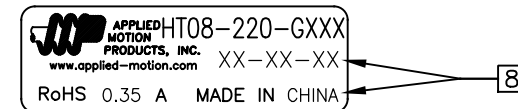
MOTOR SPECIFICATIONS:		GEARMOTOR SPECIFICATIONS:	
NUMBER OF PHASES: 2		TEMP. RISE: 80°C MAX.	[6]
STEPS PER REVOLUTION: 200		OPERATING AMB. TEMP. RANGE: -20 TO +50 °C	
STEP ANGLE: 1.8°		STORAGE TEMP. RANGE: -20 TO +70 °C	
RATED CURRENT: 0.35 A		RELATIVE HUMIDITY: 85% MAX NON-CONDENSING	
RESISTANCE PER PHASE: 11.5 Ohms	[4]		
INDUCTANCE PER PHASE: 3.4 mH	[5]		
ROTOR INERTIA: 2.0 g-cm <sup>2</sup> ( 0.01oz-in <sup>2</sup> )NOM			
HOLDING TORQUE 0.015 Nm ( 2.12 oz-in)NOM			
INSULATION CLASS: B (130°C)			
BEARINGS: ABEC 3, DOUBLE SHIELDED, NS7 GREASE			

NOTES, UNLESS OTHERWISE SPECIFIED:

- HIPOT 500 VAC, 60 Hz FOR ONE MINUTE.
- LEADS: 4, AWG 26, 7 STRAND MIN., UL AND CSA APPROVED, UL 1061
- INSULATION RESISTANCE: 100 MEGOHMS MIN AT 500 VDC.
- [4] AS MEASURED ACROSS EACH PHASE.
- [5] AS MEASURED ACROSS EACH PHASE USING AN A.C. INDUCTANCE BRIDGE AT 1 KHz.
- [6] AS MEASURED BY THE CHANGE IN RESISTANCE METHOD, WITH RATED CURRENT APPLIED TO 2 PHASES; WITH MOTOR AT REST.
- THIS MOTOR IS MANUFACTURED IN COMPLIANCE WITH THE CURRENT EU RoHS DIRECTIVE.
- [8] MOTOR LABEL TO INCLUDE "ROHS" COMPLIANT, AMP P/N, 'MADE IN (COUNTRY OF ORIGIN)', AND DATE CODE.
- ALL MOTOR SPECIFICATIONS AND OPERATING INSTRUCTIONS CAN BE FOUND AT APPLIED-MOTION.COM.
- [10] SHAFT OPTION: IF DOUBLE SHAFT REQUIRED ADD "D" TO END OF PART NUMBER.  
DOUBLE SHAFT REQUIRES ADDED HOLES FOR ENCODER OPTION.

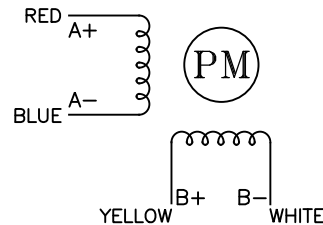
REVISIONS				
ECO NO.	REV	DESCRIPTION	DATE	APPROVED
7935	A	PRELIMINARY RELEASE	7/2/18	J.KORDIK
-	-	-	-	-
-	-	-	-	-
-	-	-	-	-
-	-	-	-	-
-	-	-	-	-
-	-	-	-	-
-	-	-	-	-
-	-	-	-	-
-	-	-	-	-
-	-	-	-	-

LABEL DETAIL



SWITCHING SEQUENCE FOR CW ROTATION  
FACING MOUNTING END

STEP	RED	BLUE	YELLOW	WHITE
0	+	-	+	-
1	-	+	+	-
2	-	+	-	+
3	+	-	-	+
4	+	-	+	-



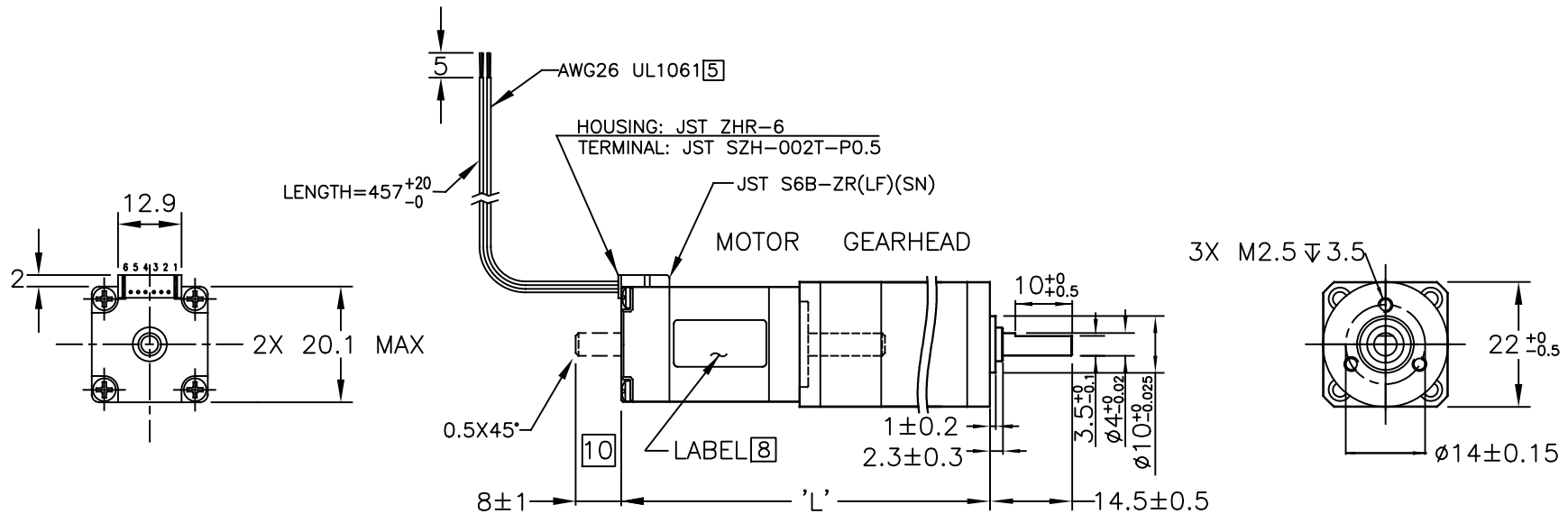
CONTRACT NO. -				
APPROVALS	DATE	STEP MOTOR WITH GEARHEAD ASSEMBLY - OUTLINE DRAWING		
DRAWN R.JONEZ	6/15/18	B	COMPUTER DATA BASE DRAWING	DWG NO. HT08-220-GXXX
CHECKED -	-		REV A	
APPROVED -	-			
APPROVED -	-			
SCALE: NONE		SHEET 1 OF 2		

GEARMOTOR TECHNICAL DETAILS:

ASSEMBLY P/N	HT08-220-G005	HT08-220-G012	HT08-220-G014
TOTAL WEIGHT-MOTOR & GEARHEAD	80 g ( 0.18 lbs)	85 g ( 0.19 lbs)	85 g ( 0.19 lbs)
ASSEMBLY LENGTH - TOTAL 'L'	65.6 mm ( 2.58 in)	64.2 mm ( 2.53 in)	64.2 mm ( 2.53 in)

GEARHEAD TECHNICAL DETAILS:

GEARHEAD P/N	22PH005.50-K1	22PH012.76-K1	22PH014.29-K1
RATIO	5.5:1	12.76:1	14.29:1
MAX TORQUE CONTINUOUS	0.5 Nm ( 70.80 oz-in)	0.5 Nm ( 70.80 oz-in)	0.5 Nm ( 70.80 oz-in)
MAX TORQUE	0.8 Nm ( 113.3 oz-in)	1.0 Nm ( 141.61 oz-in)	1.0 Nm ( 141.61 oz-in)
MAX RADIAL LOAD	≤ 10 N ( 2.25 lbs)	≤ 10 N ( 2.25 lbs)	≤ 10 N ( 2.25 lbs)
MAX AXIAL LOAD	≤ 10 N ( 2.25 lbs)	≤ 10 N ( 2.25 lbs)	≤ 10 N ( 2.25 lbs)
INERTIA	0.6 g-cm <sup>2</sup> ( 0.003oz-in <sup>2</sup> )	0.5 g-cm <sup>2</sup> ( 0.003oz-in <sup>2</sup> )	0.5 g-cm <sup>2</sup> ( 0.003oz-in <sup>2</sup> )
BACKLASH	≤ 1.2 °	≤ 1.5 °	≤ 1.5 °
EFFICIENCY	90 %	81 %	81 %



<p>TOLERANCES</p> <p>*ALL DIMENSIONS IN MM</p> <p>DECIMALS: MM</p> <p>X.XX = ±0.13</p> <p>X.X = ±0.25</p> <p>ANGLES:</p> <p>MACH. = ±0.5°</p> <p>CHAM. = ±5°</p> <p>COMPUTER DATA BASE DRAWING</p>	<p>THIRD ANGLE PROJECTION</p>		<p>APPLIED MOTION PRODUCTS, INC.</p>	
	<p>APPROVALS</p> <p>DRAWN R.JONEZ</p> <p>CHECKED -</p> <p>APPROVED -</p>		<p>DATE</p> <p>6/15/18</p>	
	<p>STEP MOTOR WITH GEARHEAD ASSEMBLY - OUTLINE DRAWING</p>		<p>DWG NO.</p> <p>HT08-220-GXXX</p>	<p>REV</p> <p>A</p>
	<p>SCALE: NONE</p>		<p>SHEET 2 OF 2</p>	