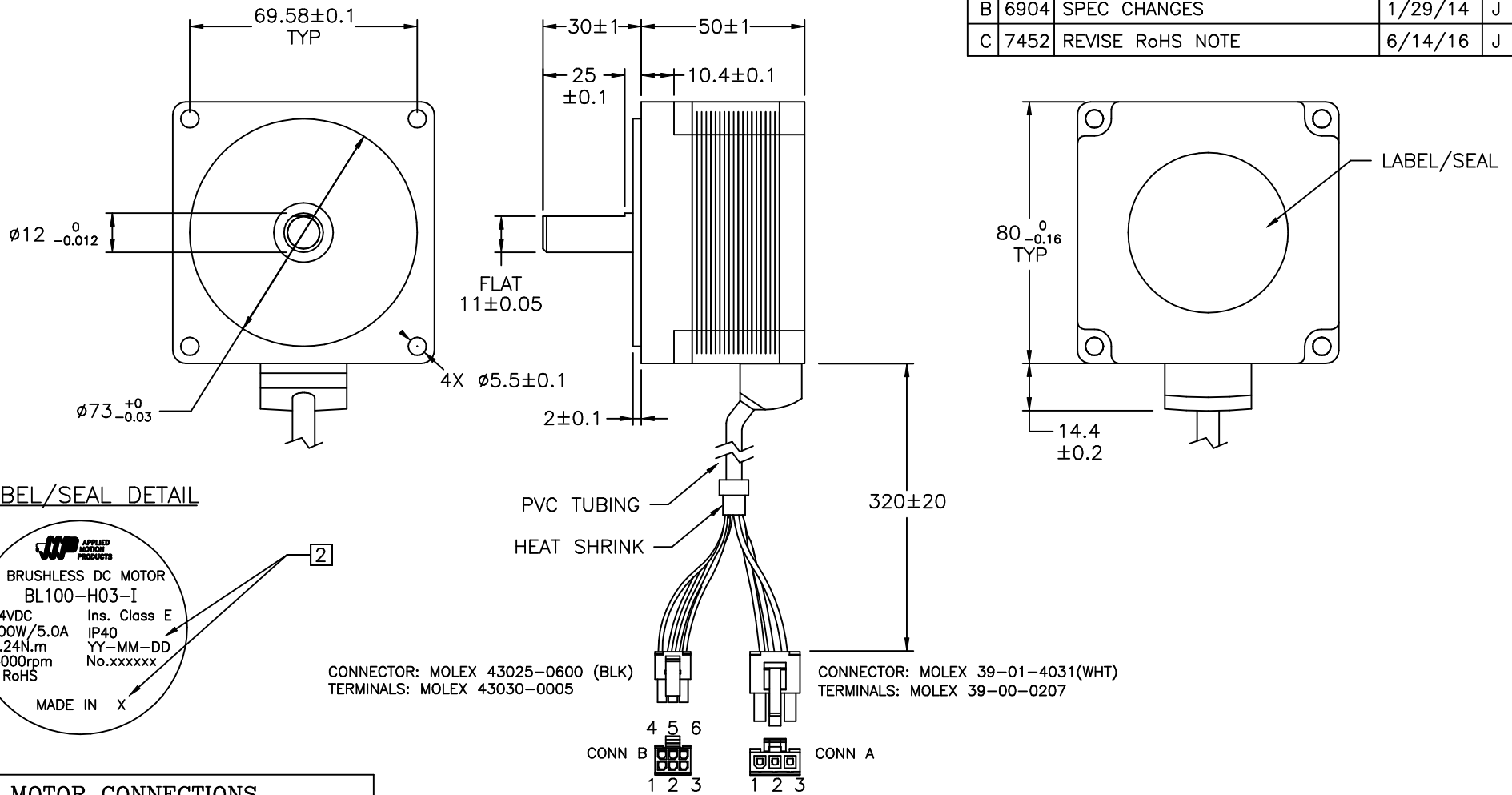
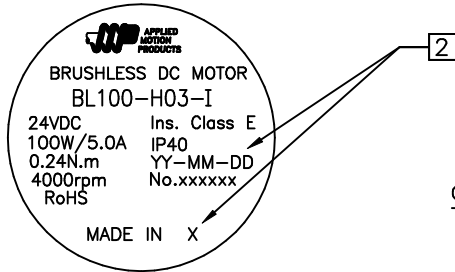


| REVISIONS |      |                  |          |          |
|-----------|------|------------------|----------|----------|
| REV       | ECO  | DESCRIPTION      | DATE     | APPROVED |
| A         | 6852 | INITIAL RELEASE  | 12/11/13 | J KORDIK |
| B         | 6904 | SPEC CHANGES     | 1/29/14  | J KORDIK |
| C         | 7452 | REVISE RoHS NOTE | 6/14/16  | J KORDIK |



LABEL/SEAL DETAIL



CONNECTOR: MOLEX 43025-0600 (BLK)  
TERMINALS: MOLEX 43030-0005

CONNECTOR: MOLEX 39-01-4031(WHT)  
TERMINALS: MOLEX 39-00-0207

| MOTOR CONNECTIONS |           |           |      |     |
|-------------------|-----------|-----------|------|-----|
| WIRE COLOR        | FUNCTION  | CONNECTOR | PIN# | AWG |
| ORANGE            | U         | CONN A    | 2    | 18  |
| YELLOW            | V         | CONN A    | 3    | 18  |
| BLUE              | W         | CONN A    | 1    | 18  |
| ORANGE            | HU        | CONN B    | 6    | 24  |
| BLUE              | HW        | CONN B    | 4    | 24  |
| YELLOW            | HV        | CONN B    | 3    | 24  |
| BLACK             | GND       | CONN B    | 5    | 24  |
| RED               | VCC (+5V) | CONN B    | 1    | 24  |
| -                 | N/C       | CONN B    | 2    | -   |

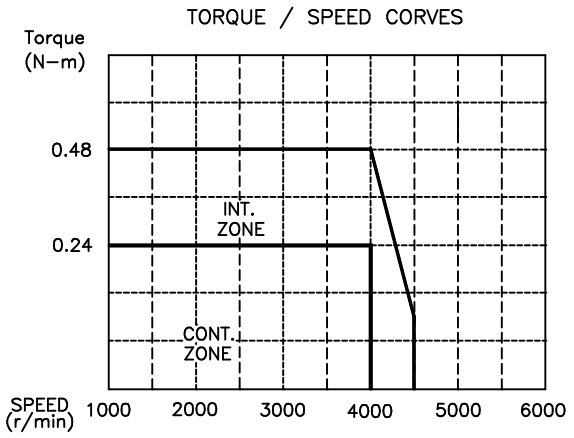
| TOLERANCES   |  | THIRD ANGLE PROJECTION   |   | APPLIED MOTION PRODUCTS, INC.     |                               |
|--|--|--|---|-----------------------------------|-------------------------------|
| DECIMALS: MM (INCH)<br>X.XXX = $\pm$ (.005)<br>X.XX = $\pm$ 0.13 (.010)<br>X.X = $\pm$ 0.25 (.020) |  |  |   | <b>BRUSHLESS DC MOTOR OUTLINE</b> |                               |
| ANGLES:<br>MACH. = $\pm$ .5°<br>CHAM. = $\pm$ 5°   |  | APPROVALS<br>DRAWN: <b>R. JONEZ</b><br>CHECKED: <b>R. BARRICK</b><br>APPROVED: | DATE<br><b>9/30/13</b><br><b>12/11/13</b> | <b>B</b>                          | DWG NO.<br><b>BL100-H03-I</b> |
| COMPUTER DATA<br>BASE DRAWING  |  | SCALE: NONE  |   | REV<br><b>C</b>                   | SHEET 1 OF 2                  |

BRUSHLESS DC MOTOR SPECIFICATION:

| ITEM                     | UNIT              | SPEC                  |
|--------------------------|-------------------|-----------------------|
| RATED OUTPUT:            | W                 | 100                   |
| RATED TORQUE:            | N-m (kgf-cm)      | 0.24(2.44)            |
| TORQUE CONSTANT:         | mN-m/A            | 46.5                  |
| RATED SPEED:             | r/min             | 4000                  |
| MAXIMUM SPEED:           | r/min             | 4500                  |
| ROTOR MOMENT OF INERTIA: | Kg-m <sup>2</sup> | 0.38X10 <sup>-4</sup> |
| INSULATION CLASS:        | 120°C             | E                     |


| ITEM                           | UNIT         | SPEC |
|--------------------------------|--------------|------|
| VOLTAGE RATING:                | VDC          | 24   |
| RATED WINDING CURRENT: E.D.C.M | A (rms)      | 5.0  |
| PEAK CURRENT: E.D.C.M          | A (rms) ±10% | 10   |
| VOLTAGE CONSTANT: E.D.C.M      | V/krpm ±10%  | 3.44 |
| WINDING RESISTANCE: E.D.C.M    | V ±10%       | 0.18 |
| WINDING INDUCTANCE: E.D.C.M    | mH ±30%      | 0.34 |
| PROTECTIVE ENCLOSURE RATING    |              | IP40 |

PERMANENT MAGNET 8 POLES, 3 PHASE DELTA CONNECTED MOTOR  
 WEIGHT: 0.98 kg (2.16 lbs)



NOTES, UNLESS OTHERWISE SPECIFIED:

- THIS MOTOR IS MANUFACTURED IN COMPLIANCE WITH THE CURRENT EU RoHS DIRECTIVE.
- MOTOR LABEL TO INCLUDE "ROHS" COMPLIANT, 'MADE IN (COUNTRY OF ORIGIN)' AND DATE CODE.

|              |      |  |          |                        |        |
|--------------|------|--|----------|------------------------|--------|
| CONTRACT NO. |      |  <b>APPLIED<br/>MOTION<br/>PRODUCTS, INC.</b> |          |                        |        |
| APPROVALS    | DATE | <b>BRUSHLESS DC MOTOR<br/>ELECTRICAL SPECS</b>   |          |                        |        |
| DRAWN        |      |  |          |                        |        |
| CHECKED      |      |  |          |                        |        |
| APPROVED     |      |  |          |                        |        |
|              |      | B  | FSCM NO. | DWG NO.<br>BL100-H03-I | B<br>C |
| APPROVED     |      | SCALE: NONE  |          | SHEET 2 OF 2           |        |