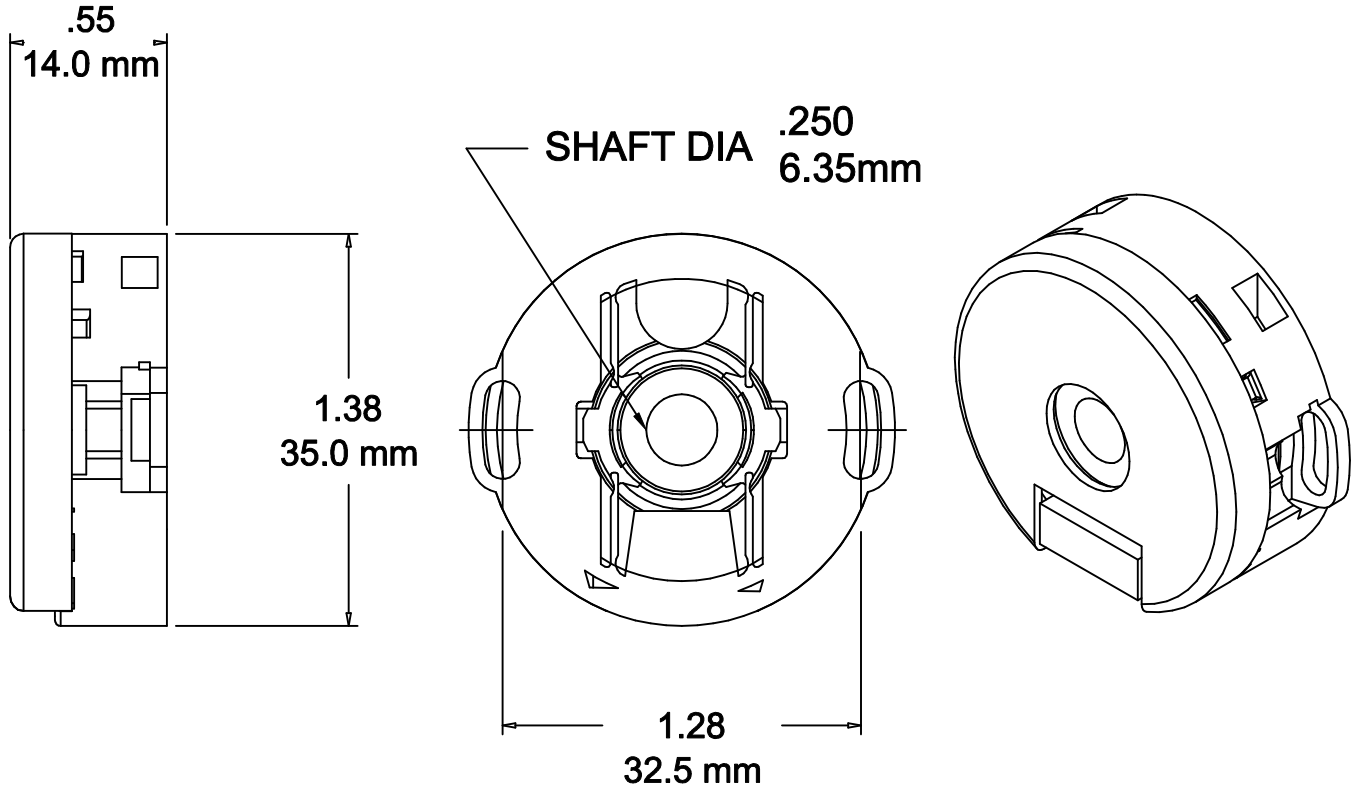



APPLIED MOTION PRODUCTS  
 404 WESTRIDGE DRIVE  
 WATSONVILLE, CALIFORNIA, 95076  
 MAIN PHONE: (831) 761-6555  
 FAX: (831) 761-6544

REVISIONS				
REV	ECD	DESCRIPTION	DATE	APPROVED
A	5353	INITIAL RELEASE	11/14/06	HAZELWOOD
B	6172	REDRAWN, ADD SH 2&3	9/21/10	J KORDIK
C	6707	DIMENSION CORRECTED	3/5/13	J KORDIK



**NOTES, UNLESS OTHERWISE SPECIFIED:**

1. RENCO P/N: R35i-2000/2-1/4-LD/LD-5/0-6-R-H
2. REFER TO RENCO WEBSITE FOR DETAILS
3. CABLE, USE: 3004-195-XX.
4. MOUNTING HARDWARE: 2 SCREWS, #2-56 X .250, ACF P/N PPM-02C04-S0.
5. STEPPER AND VALUELINE DESIGNATION - SUFFIX = ZAA.
6. REFER TO SHEET 2 AND 3 FOR MOUNTING ENCODER.

CONTRACT NO. -		 <b>APPLIED MOTION PRODUCTS, INC.</b>				
TOLERANCES	APPROVALS	DATE	ENCODER SPEC R35i - ZAA			
DECIMALS: MM (INCH) X.XXX = ± (.005) X.XX = ±0.13 (.010) X.X = ±0.25 (.020) ANGLES: MACH. = ±.5° CHAM. = ±5°	DRAWN <i>R.JONEZ</i>	09/15/10				
	CHECKED		B	FSCM NO.	DWG NO. 970-1001	REV C
	APPROVED		SCALE: NONE		SHEET 1 OF 3	

**R35i - Data Only  
Mounting instructions**

**Verify that you received the following items:**

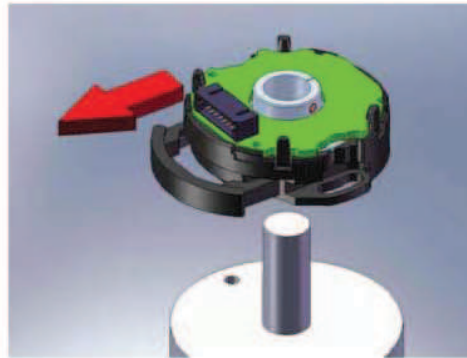
- Encoder
- Cover
- Setscrew wrench
- M2.5 or #2-56 Torx Head Mounting Screws with Captive Washer for C or H option
- M2.5 or #4-40 Socket Head Cap Screws for C4 or H4 option

**Before you begin:**

The following instructions are for random index location with respect to the shaft. If the index output needs to be aligned to the shaft, please contact factory for appropriate method for your motor type.

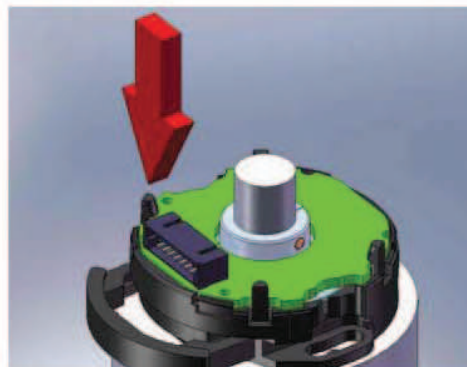
**CAUTION --- ESD Precautions Apply --- CAUTION**

**Encoder Preparation**



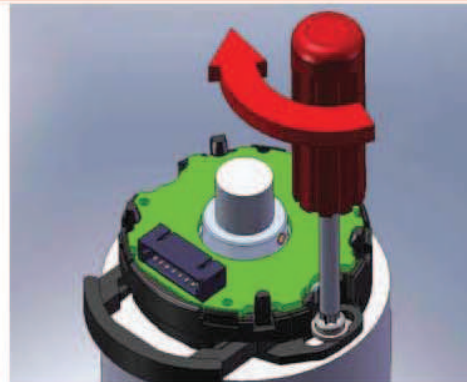
**Verify that the slide lock mechanism is fully extended. If needed, apply thread locker to the mounting holes.**

**Step1**



**Slide encoder onto the motor shaft.**

**Step 2**



**Install mounting screws finger tight, then torque to 35-40 oz-in.**

This document is the property of RENCO Encoders and is submitted in confidence. Disclosure, reproduction or publication without written authorization is prohibited.

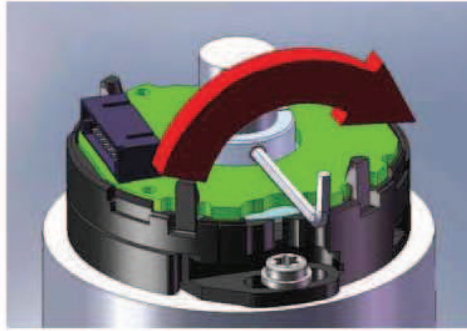
542543

Change:

	Release-no.		Created	Responsible	Released	Version	Rev.	Sheet	Page
	<b>07698</b>	Name	Powell		Rhodes	<b>D548176 - 01 - A - 01</b>			1/
		Date	19.11.2009		14.12.2009	Document no.			2

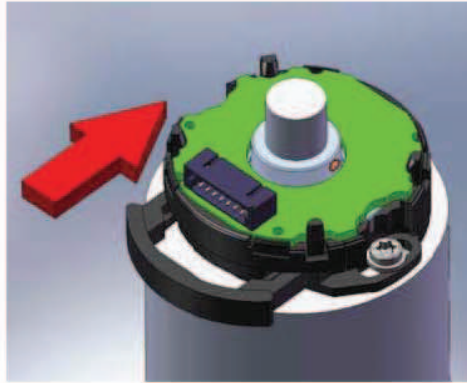
This document is the property of RENCO Encoders and is submitted in confidence. Disclosure, reproduction or publication without written authorization is prohibited.

**Step 3**



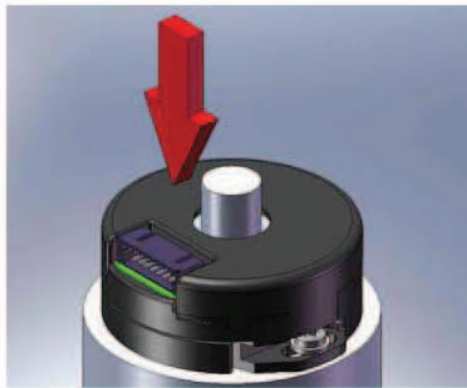
**Torque set screw to 20 oz-in.  
Bond hub to shaft for high  
acceleration or deceleration  
applications.**

**Step 4**



**Push in slide lock mechanism.**

**Step 5**




**Install cover.**

**Step 6**



**Install cable.**

	Release-no.		Created	Responsible	Released	Version	Rev.	Sheet	Page
	<b>07698</b>	Name	Powell		Rhodes	<b>D548176</b>	<b>- 01 - A - 01</b>		2/
		Date	19.11.2009		14.12.2009		Document no.		2