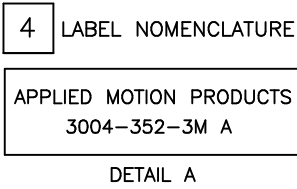
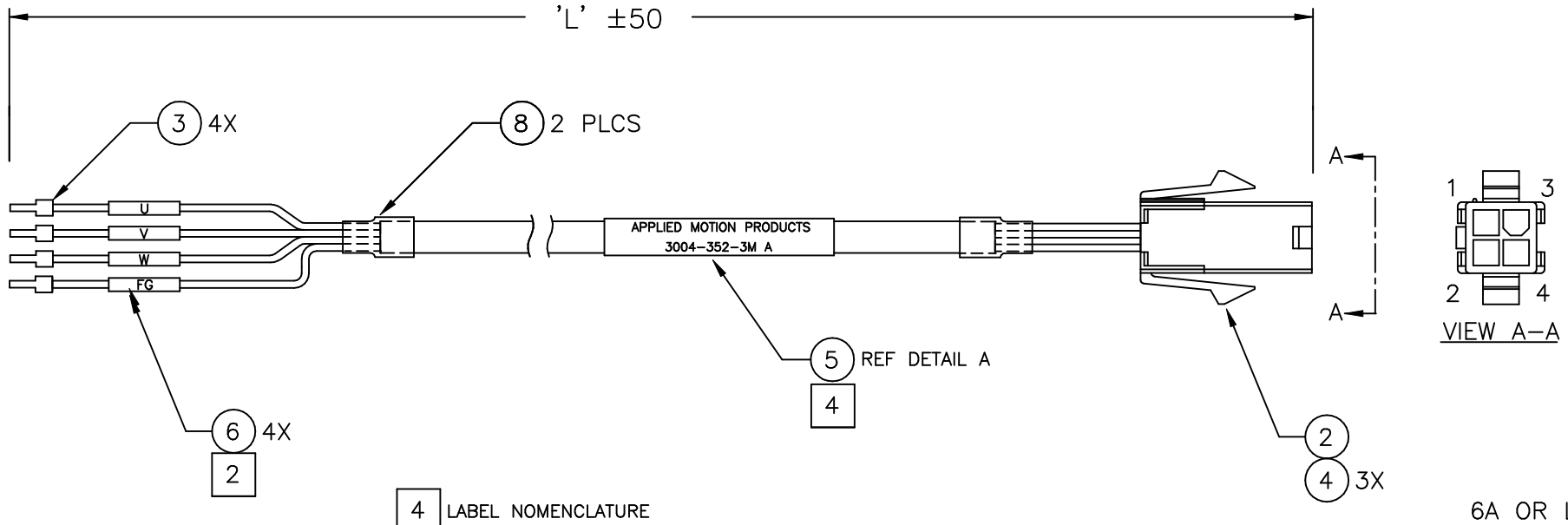


NOTES: UNLESS OTHERWISE SPECIFIED

1. THIS CABLE TO BE MANUFACTURED IN COMPLIANCE WITH THE LATEST EC DIRECTIVE.
2. MARK EACH LABEL WITH SIGNAL NAME SHOWN IN CABLE CONNECTOR TABLE.
3. CABLE TO BE 3 CONDUCTORS, 18 AWG, UL 2517 RATED, 300V.
4. MARK LABEL PER CABLE LENGTH TABLE.
5. CABLE RATED AT 6A OR LESS.

REVISIONS			
REV	DESCRIPTION	DATE	APPROVED
A	INITIAL RELEASE ECO 7675	7/25/17	J.KORDIK



4

CABLE LENGTH TABLE	
MARK PART NO REV	'L'
3004-352-1M A	1M (3.3 FT)
3004-352-3M A	3M (9.8 FT)
3004-352-5M A	5M (16.4 FT)
3004-352-10M A	10M (32.8 FT)

CABLE/CONNECTOR TABLE		
PIN NO	LEAD COLOR	SIGNAL 2
1	RED	U
2	YELLOW	V
3	BLUE	W
DRAIN	YELLOW/GREEN	SHLD/GND

8	2	FIT 221-3/8-BLK	SHRINK TUBING, DIA 3/8 IN, LENGTH AS NEEDED	ALLIED
7	-	-	-	-
6	4	LAT-15-361-1	LABEL, IDENTIFICATION, SMALL	BRADY OR EQUIVALENT
5	1	LAT-27-361	LABEL, IDENTIFICATION	BRADY OR EQUIVALENT
4	3	170362-1	CONTACT, CRIMP	TE OR EQUIVALENT
3	5	E1006	TERMINAL, WIRE END	KST
2	1	172159-1	CONN., 4 POS	TE OR EQUIVALENT
1	1	-	CABLE, 3 CONDUCTOR (AS SHIPPED)	-
ITEM NO.	QTY REQD	PART OR IDENTIFYING NO.	NOMENCLATURE OR DESCRIPTION	MFG.

TOLERANCES		THIRD ANGLE PROJECTION		<p>APPLIED MOTION PRODUCTS, INC.</p> <p>POWER CABLE, STD, 6A, SV200DC SERVO DRIVES</p>
DECIMALS: MM (INCH) X.XXX = ±0.013 (.005) X.XX = ±0.25 (.01) X.X = ±2.5 (0.1)				
ANGLES: MACH. = ±5° CHAM. = ±5°		APPROVALS	DATE	
COMPUTER DATA BASE DRAWING		DRAWN <i>R.JONEZ</i>	7/18/17	
		CHECKED		B DWG NO. 3004-352-XXX REV A
		APPROVED		
		SCALE: NONE		SHEET 1 OF 1