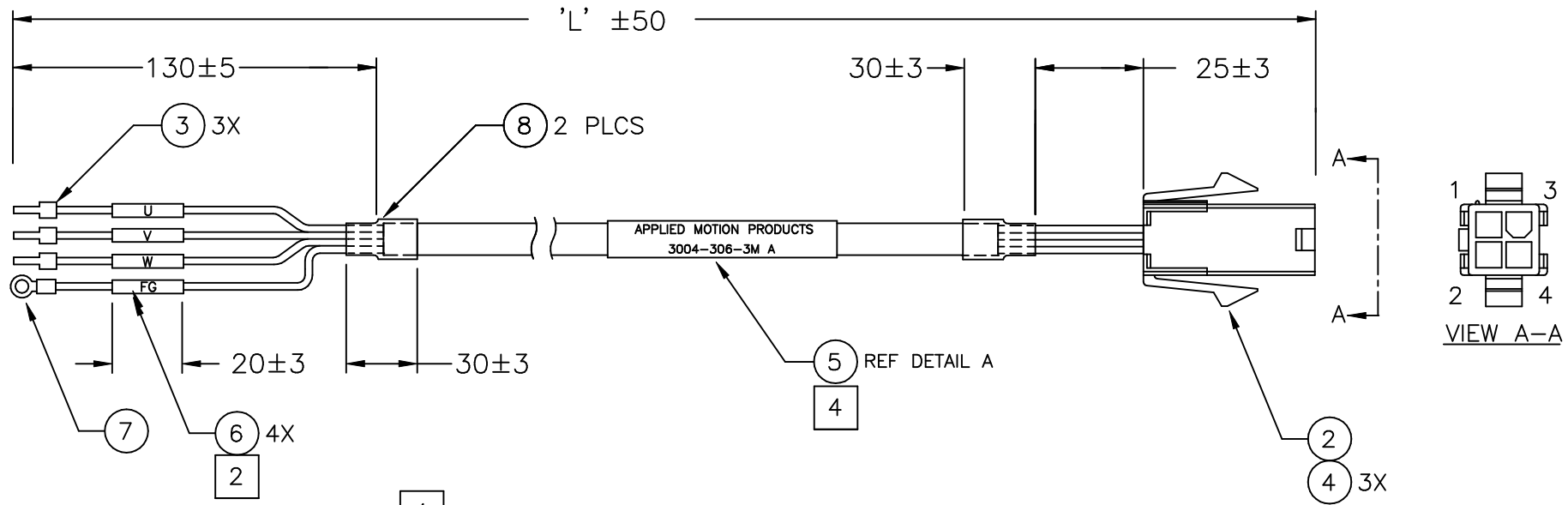


NOTES: UNLESS OTHERWISE SPECIFIED

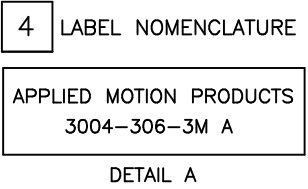
1. THIS CABLE TO BE MANUFACTURED IN COMPLIANCE WITH EC DIRECTIVE "ROHS 2002/95/EC"
- 2] MARK EACH LABEL WITH SIGNAL NAME SHOWN IN CABLE CONNECTOR TABLE.
3. CABLE TO BE 3 CONDUCTORS, 18 AWG, UL 2517 RATED, 300V.
- 4] MARK LABEL PER CABLE LENGTH TABLE.
5. CABLE IS RATED AT 5,000,000 FLEX CYCLES.

REVISIONS			
REV	DESCRIPTION	DATE	APPROVED
A	INITIAL RELEASE ECO 7267	9/9/16	J Georgiana



4

CABLE LENGTH TABLE		
MARK	PART NO	REV
3004-306-1M	A	1M (3.3 FT)
3004-306-3M	A	3M (9.84 FT)
3004-306-5M	A	5M (16.4 FT)
3004-306-10M	A	10M (32.8 FT)



CABLE/CONNECTOR TABLE		
PIN NO	LEAD COLOR	SIGNAL 2]
1	RED	U
2	YELLOW	V
3	BLUE	W
DRAIN	BLACK	SHLD/GND

8	2	FIT 221-3/8-BLK	SHRINK TUBING, DIA 3/8 IN, LENGTH AS NEEDED	ALLIED
7	1	34105	RING TERMINAL, #6 STUD, UNINSULATED	AMP OR EQUIVALENT
6	4	LAT-15-361-1	LABEL, IDENTIFICATION, SMALL	BRADY OR EQUIVALENT
5	1	LAT-27-361	LABEL, IDENTIFICATION	BRADY OR EQUIVALENT
4	3	170362-1	CONTACT, CRIMP	TE OR EQUIVALENT
3	5	E1006	TERMINAL, WIRE END	KST
2	1	172159-1	CONN., 4 POS	TE OR EQUIVALENT
1	1		CABLE, 3 CONDUCTOR (AS SHIPPED)	
ITEM NO.	QTY REQD	PART OR IDENTIFYING NO.	NOMENCLATURE OR DESCRIPTION	MFG.

TOLERANCES

DECIMALS: MM (INCH)
 X.XXX = ±0.013 (.005)
 X.XX = ±0.25 (.01)
 X.X = ±2.5 (0.1)

ANGLES:
 MACH. = ±5°
 CHAM. = ±5°

THIRD ANGLE PROJECTION

APPROVALS

DRAWN **R.JONEZ** DATE **7/28/15**

CHECKED

APPROVED

APPLIED MOTION PRODUCTS, INC.

**POWER CABLE, FLEXIBLE
J-SERIES SERVO DRIVES**

B DWG NO. **3004-306-XXX** REV **A**

SCALE: NONE SHEET 1 OF 1