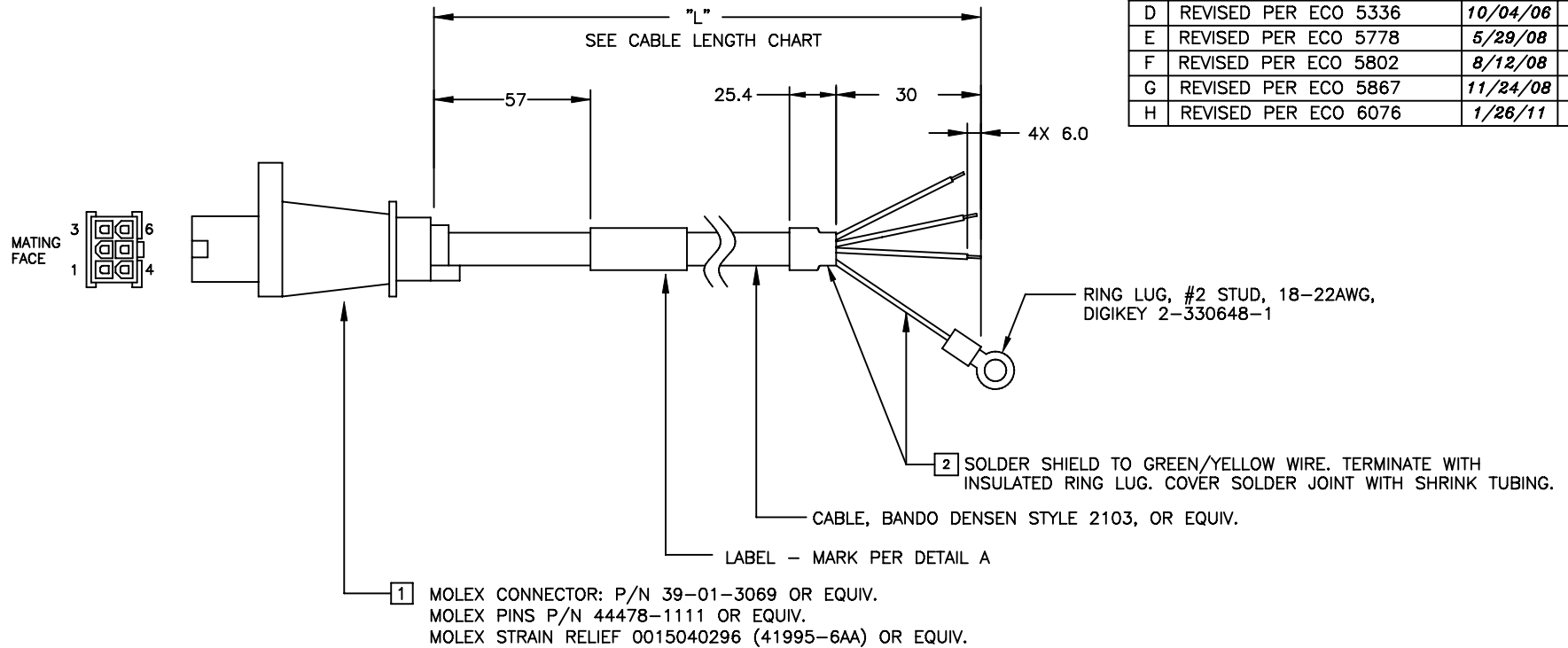


REVISIONS			
REV	DESCRIPTION	DATE	APPROVED
A	INITIAL RELEASE ECO 5298	4/20/06	<i>R. Hagelwood</i>
B	REVISED PER ECO 5330	9/22/06	<i>J. Kordik</i>
C	REVISED PER ECO 5334	9/29/06	<i>J. Kordik</i>
D	REVISED PER ECO 5336	10/04/06	<i>J. Kordik</i>
E	REVISED PER ECO 5778	5/29/08	<i>J. Kordik</i>
F	REVISED PER ECO 5802	8/12/08	<i>J. Kordik</i>
G	REVISED PER ECO 5867	11/24/08	<i>J. Kordik</i>
H	REVISED PER ECO 6076	1/26/11	<i>J. Kordik</i>



NOTES: UNLESS OTHERWISE SPECIFIED

1. REFER TO SEPARATE BILL OF MATERIALS.

2. GREEN/YELLOW WIRE CONNECTED TO SHIELD. CUT SHIELD AT CONNECTOR SIDE.

Pin #	Leadwire Color
Pos 1	RED
Pos 2	WHITE
Pos 3	BLACK
Pos 4	GREEN/YELLOW
Pos 5	NO CONNECT

CABLE LENGTH CHART				
XX	LENGTH	PART NUMBER/REV	CABLE	
-03	915 (3 FT)	3004-214-03 H	VA-MTR-CA-03	
-06	1830 (6 FT)	3004-214-06 H	VA-MTR-CA-06	
-10	3050 (10 FT)	3004-214-10 H	VA-MTR-CA-10	
XX	XX +/- 1.5%	-	-	

APPLIED MOTION PRODUCTS
VA-MTR-CA-XX
3004-214-XX X

DETAIL A
REFER TO CABLE LENGTH CHART
FOR DASH NUMBER AND REVISION LEVEL

TOLERANCES		THIRD ANGLE PROJECTION		APPLIED MOTION PRODUCTS, INC.	
DECIMALS: MM (INCH) X.XXX = ±0.01 (.005) X.XX = ±0.10 (.010) X.X = ±0.20 (.020)				ASSEMBLY CABLE EXTENSION DWG NO. 3004-214-XX REV H	
ANGLES: MACH. = ±.5° CHAM. = ±5°		APPROVALS	DATE		
COMPUTER DATA		<i>R. JONEZ</i>	4/14/06		
BASE DRAWING		<i>M. SALAS</i>	6/28/08		
		APPROVED	<i>R. Hagelwood</i>	4/20/06	SCALE: NONE
				SHEET	1 OF 1