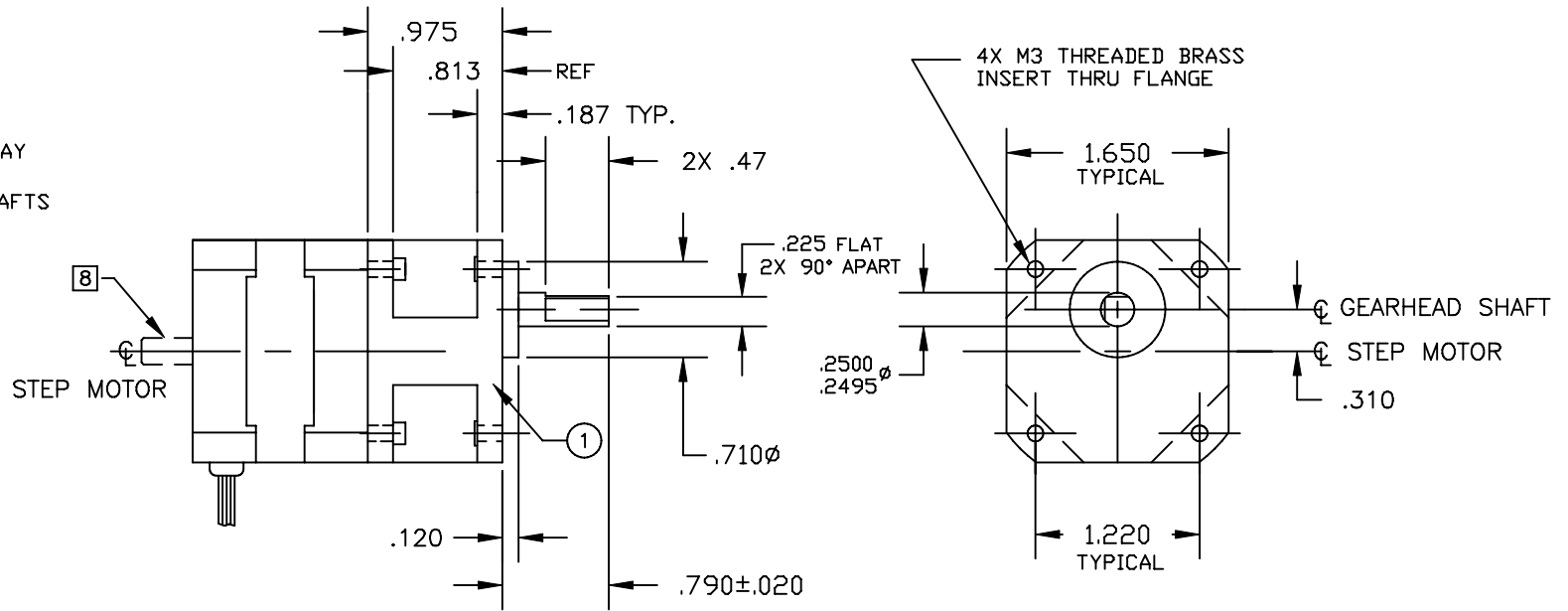


NOTES:

1. GEARMOTOR AMBIENT OPERATING TEMPERATURE: -20 TO 50°C.
2. GEARHEAD BEARINGS: OIL IMPREGNATED BRONZE BUSHINGS.
3. GEARS ARE HARDENED STEEL AND PRECISION HOBBED.
4. GEARHEAD OUTPUT SHAFT IS HARDENED STAINLESS STEEL.
5. GEARHEAD HOUSING IS MOLDED BLACK RYTON R7.
6. RADIAL LOAD MEASURED HALFWAY OUT GEARHEAD OUTPUT SHAFT.
7. GEARHEAD INPUT & OUTPUT SHAFTS TURN IN THE SAME DIRECTION.
8. SINGLE SHAFTED GEARMOTOR INDICATED BY "S" AT END OF PART NO. DOUBLE SHAFT REQUIRES "D" AT END OF P/N.
9. PROTECT GEARHEAD OUTPUT SHAFT FROM IMPACT.
10. DO NOT RUN GEARHEAD AGAINST HARD STOPS.

REVISIONS			
REV	DESCRIPTION	DATE	APPROVED
A	INITIAL RELEASE ECO 3935	11/26/95	K. Kordik
B	CHG 4-40 TAP ECO 4070		



GEARHEAD RATINGS

GEAR RATIO	TORQUE RATING		BACKLASH	SHAFT PLAY (MAX.)		INPUT SPEED (RPM) MAX	MINIMUM EFFICIENCY (PERCENT)	MAXIMUM INERTIA (OZ.IN.SEC <sup>2</sup> )	SHAFT LOADING		WEIGHT		
	EXACT RATIO	CONTINUOUS (OZ.IN.)		PEAK (OZ.IN.)	STANDARD (MINUTES)				RADIAL (INCH)	END (INCH)		RADIAL (LBS.)	AXIAL (LBS.)
5:1	7	105	125	45 MAXIMUM	.002	.010	1000	80%	1.04 X 10 <sup>-4</sup>	4.5	6	3.5	9

1		1		3186-670		5:1 GEARHEAD					
INCH				THIRD ANGLE PROJECTION		TOLERANCES		CONTRACT NO. CAT		APPLIED MOTION PRODUCTS, INC.	
HT17-075				HT17-071		HT17-068		HT17-068		HT17-068	
NEXT ASSY				USED ON		APPLICATION		APPROVALS		DATE	
FINISH: BLACK				DECIMALS: X.XXX = ±.005 X.XX = ±.010 X.X = ±.020		ANGLES: MACH. = 5° CHAM. = ±5°		DRAWN R. BARRICK		4/7/95	
								CHECKED B. Corser		11/17/95	
								APPROVED K. Kordik		11/26/95	
								APPROVED			
								B		FSCM NO.	
								DWG NO.		17-2-05	
								SCALE: 1=1		SHEET 1	
								REV B			