

SPECIFICATIONS:

STEPS PER REVOLUTION: 200	ROTOR INERTIA: 1.4 KG-CM ² (7.8 OZ-IN ²)NOM
STEP ANGLE: 1.8°	HOLDING TORQUE: 46.8KG-CM (650 OZ-IN)MIN ^[1]
STEP TO STEP ACCURACY: ± 5 % ^{[1], [2]}	DETENT TORQUE:1.296KG-CM (18.0 OZ-IN)MIN
POSITIONAL ACCURACY: ± 5 % ^{[1], [3]}	
HYSTERESIS: %	INSULATION CLASS: B
WINDING RESISTANCE: 0.19 OHM ±10% AT 25° ^[7]	BEARINGS: ABEC 3, DOUBLE SHIELDED
WINDING INDUCTANCE: 1.3 mH ± 20% ^{[7], [8]}	
PHASE VOLTAGE: 1.6 VDC ^[7]	TEMP. RISE: 80°C MAX. ^[9]
PHASE CURRENT: 8.6 AMP [(RATED)PARALLEL] ^[12]	OPERATING TEMP. RANGE: -20 TO +50°C
	STORAGE TEMP. RANGE: -40 TO 70°C
SHAFT RUNOUT: 0.05 T.I.R.	RELATIVE HUMIDITY RANGE: 5 TO 95 %
RADIAL PLAY: 0.025 MAX W/A .5KG RADIAL LOAD.	
END PLAY: 0.075 MAX W/A 1KG AXIAL LOAD.	

HT34-485

REVISIONS

ECO NO.	REV	DESCRIPTION	DATE	APPROVED
4383	A	INITIAL RELEASE	2/16/02	J.D.
4391	B	ADD ENCODER HOLES	3/14/02	J.D.
4393	C	CHG DRAIN, WAS: AWG 22		
5235	C	ADD EU COMPLIANCE NOTES	8/25/05	R. Hagelwood

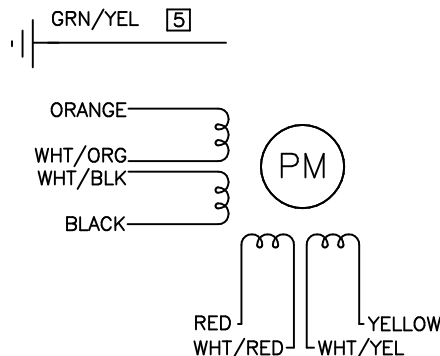
NOTES, UNLESS OTHERWISE SPECIFIED:


- [1] MEASUREMENTS MADE AT RATED CURRENT IN EACH PHASE.
- [2] BETWEEN ANY TWO ADJACENT STEP POSITIONS.
- [3] MAXIMUM ERROR IN 360°.
4. HIPOT 500 VAC, 60 Hz FOR ONE MINUTE.
- [5] LEADS: 8 ,AWG 22,7 STRAND MIN.,UL AND CSA APPROVED, DRAIN: 1,AWG 24, UL 1430.
6. INSULATION RESISTANCE: 100 MEGOHMS MIN AT 500 VDC.
- [7] AS MEASURED ACROSS ANY WINDINGS CONNECTED IN PARALLEL.
- [8] AS MEASURED ACROSS ANY WINDING USING AN A.C. INDUCTANCE BRIDGE, AT 1KHz.
- [9] AS MEASURED BY THE CHANGE IN RESISTANCE METHOD, WITH RATED VOLTAGE APPLIED TO 2 PHASES; WITH MOTOR AT REST.
10. HIGH TORQUE MOTOR DESIGN.
11. ROTOR & STATOR LAMINATED CONSTRUCTION.
- [12] POWER SUPPLY VOLTAGE TO AMPLIFIER 80V OR LESS. IF GREATER THAN 80 VOLTS RATED CURRENT IS 4.5 AMPS, PARALLEL CONNECTED, W/50% DUTY CYCLE. (MOTOR MAY BE LEFT ENERGIZED AT 50% CURRENT BETWEEN CYCLES.)
- [13] ADD "D" TO END OF PART NUMBER IF DOUBLE SHAFT IS REQUIRED.
14. THIS MOTOR TO BE MANUFACTURED IN COMPLIANCE WITH EU DIRECTIVE "ROHS 2002/95/EC".
15. MOTOR LABEL TO INCLUDE "ROHS" COMPLIANT.

PARALLEL CONNECTION

SWITCHING SEQUENCE FOR CW ROTATION
FACING MOUNTING END

STEP	BLACK & WHT/ORG	ORANGE & WHT/BLK	RED & WHT/YEL	YELLOW & WHT/RED
0	+	-	+	-
1	-	+	+	-
2	-	+	-	+
3	+	-	-	+
4	+	-	+	-



CONTRACT NO. CAT TS3864N2435		 APPLIED MOTION PRODUCTS, INC.			
APPROVALS	DATE	STEP MOTOR OUTLINE			
DRAWN <i>R. BARRICK</i>	2/14/02				
CHECKED <i>R. Hagelwood</i>	2/15/02	B	COMPUTER DATA BASE DRAWING	DWG NO. HT34-485	REV D
APPROVED <i>J. Daley</i>	2/16/02		SCALE: 1=1	SHEET 1 OF 2	

